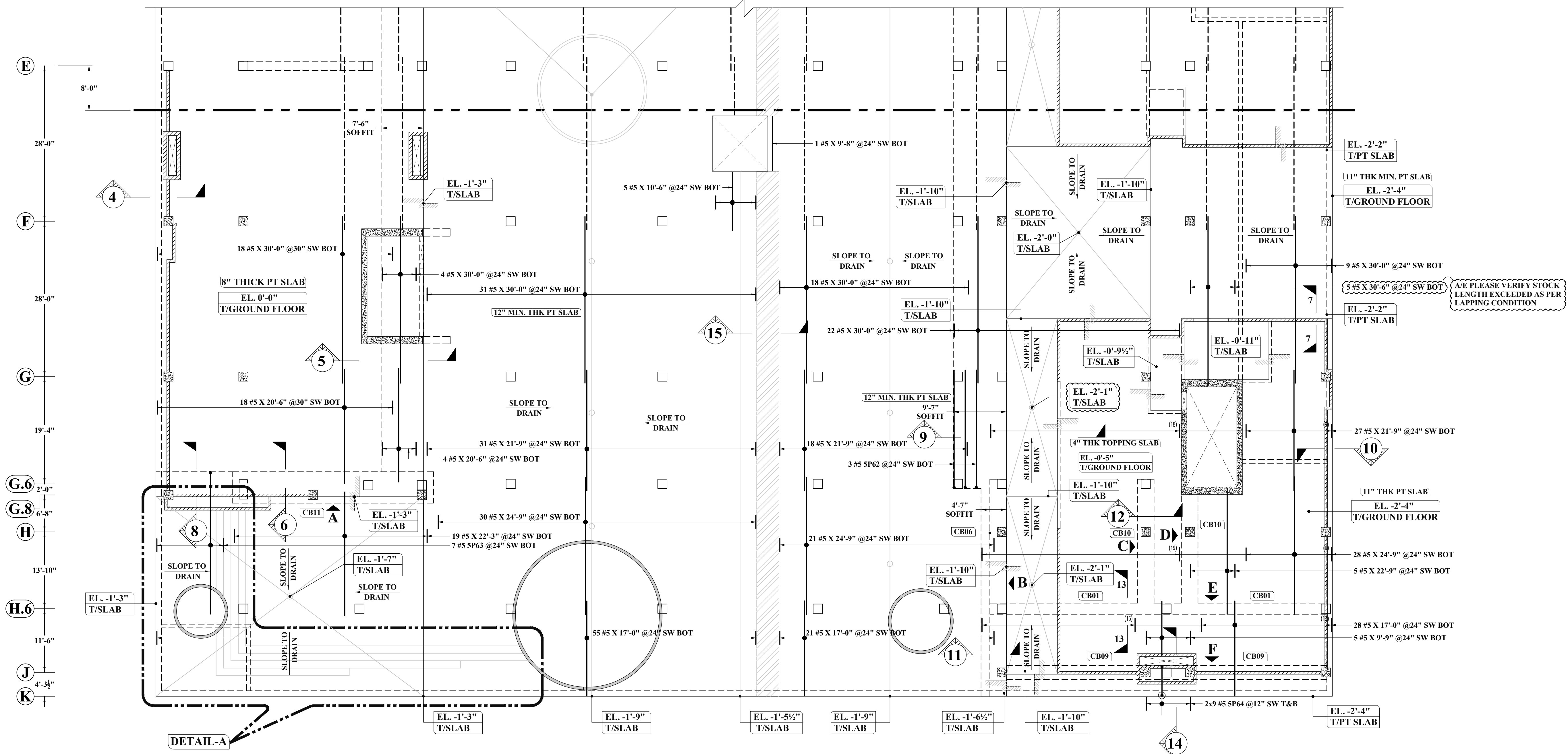


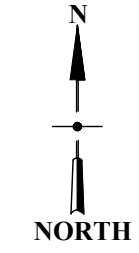
FOR CONTINUATION PT SLAB (NORTH) DRAWINGS



ABBREVIATIONS

TOP	-
BOTTOM	BOT
TOP&BOTTOM	T&B
CONTINUOUS	CONT
FACE BAR	-
CORNER BAR	COR
VERTICAL	VERT
HORIZONTAL	HOR
STIRRUPS	STIRR
EACH WAY	EW
EACH FACE	EF
INNER FACE	IF
OUTER FACE	OF
EACH SIDE	ES
MASONRY	M
DOWEL	DWL
DOWEL/VERTICAL	D/V
TRANSVERSE	TRANS
LONG WAY BAR	LW
SHORT WAY BAR	SW

(SHORT WAY BOTTOM REINFORCEMENT DETAILS ONLY)
PT SLAB REINFORCEMENT DETAILS GROUND FLOOR : SOUTH
 SCALE : 1/10"=1'-0"
 REF : S201FS,S201MS,S201PS,A200S & A211S



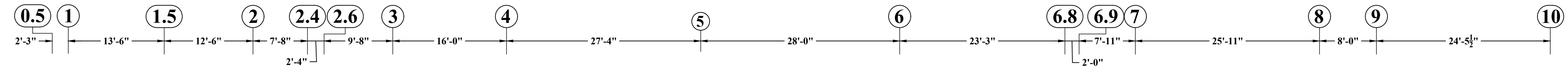
LAP SCHEDULE (CLASS-B)
 REF: S101A

SIZE	5000 PSI	
	TOP	OTHER
#3	22"	17"
#4	29"	22"
#5	36"	28"
#6	43"	33"
#7	63"	49"
#8	72"	55"
#9	81"	63"
#10	91"	70"

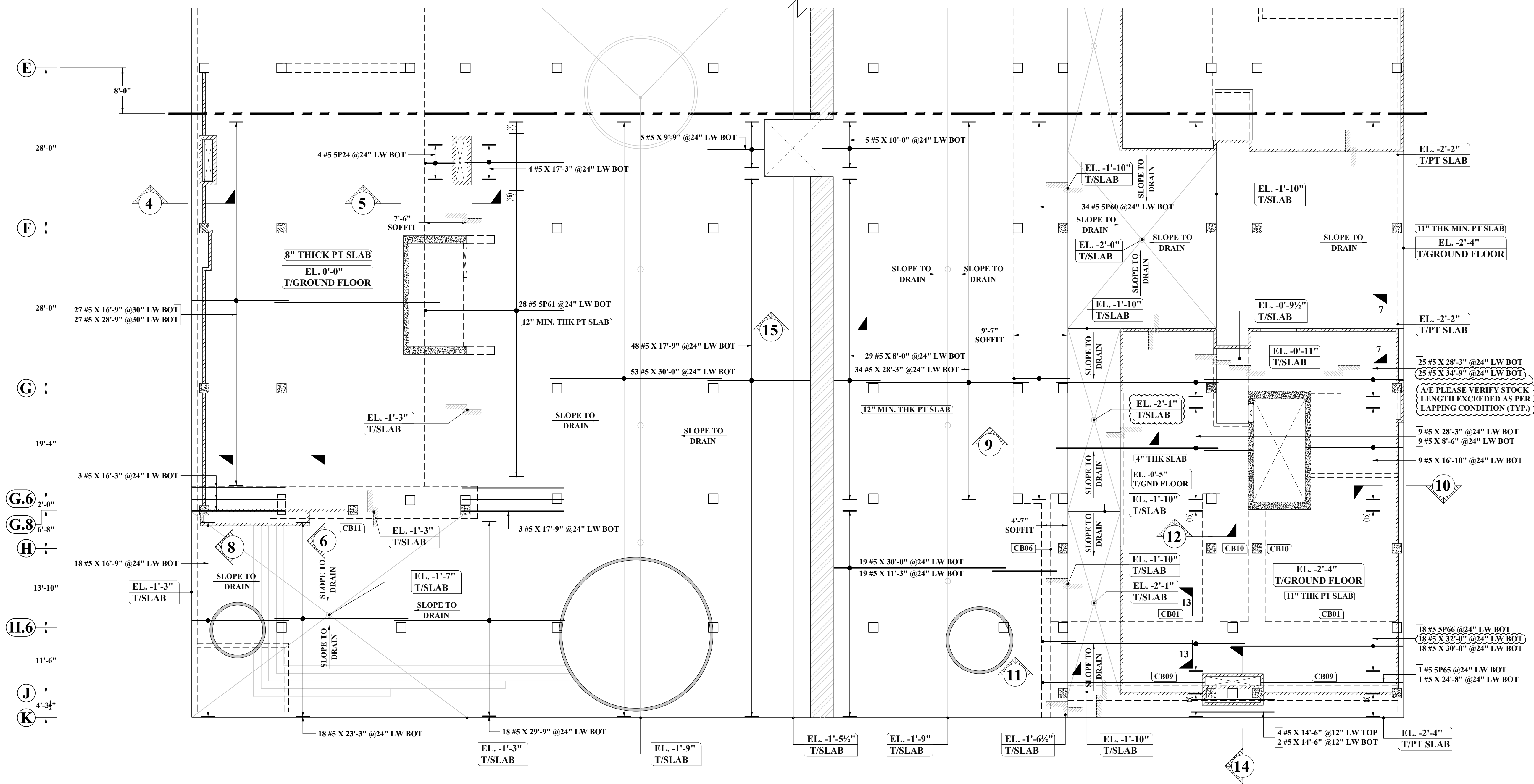
- NOTES:-**
- TYPICAL CLEARANCES
 A). INTERIOR TOP - 3/4"
 B). EXTERIOR TOP - 1"
 C). BOTTOM - 3/4"
 - A/E PLEASE VERIFY THE ALL CLOUDED ITEMS
 - PROVIDE FIELD CUT AS REQUIRED LOCATIONS
 - BAR TO BE PLACED AT EQUAL SPACING U.O.N.
 - TILT HOOK TO ACCOMMODATE THE COVER, IF NEED

ALL BARS IN THIS DRAWING ASTM A615 GRADE 60 BLACK UNCOATED

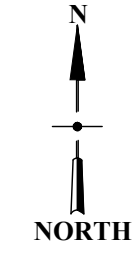
NOTE: REINFORCING STEEL PLACING DRAWINGS TO BE USED ONLY IN CONJUNCTION WITH CONTRACT DRAWINGS AND SPECIFICATIONS. ELEVATIONS & DIMENSIONS SHOWN ON THIS DRAWING ARE FOR VERIFICATION BY THE EOR OR FOR DETAILING PURPOSES ONLY AND SHOULD NOT BE USED FOR CONSTRUCTION UNLESS VERIFIED BY THE ARCHITECT, ENGINEER OF RECORD, OR CONTRACTOR.



FOR CONTINUATION PT SLAB (NORTH) DRAWINGS



(LONG WAY BOTTOM REINFORCEMENT DETAILS ONLY)
PT SLAB REINFORCEMENT DETAILS GROUND FLOOR : SOUTH
 SCALE : 1/10"=1'-0"
 REF : S201FS,S201MS,S201PS,A2005 & A211S



ABBREVIATIONS

TOP	-
BOTTOM	BOT
TOP&BOTTOM	T&B
CONTINUOUS	CONT
FACE BAR	-
CORNER BAR	COR
VERTICAL	VERT
HORIZONTAL	HOR
STIRRUPS	STIRR
EACH WAY	EW
EACH FACE	EF
INNER FACE	IF
OUTER FACE	OF
EACH SIDE	ES
MASONRY	M
DOWEL	DWL
DOWEL/VERTICAL	D/V
TRANSVERSE	TRANS
LONG WAY BAR	LW
SHORT WAY BAR	SW

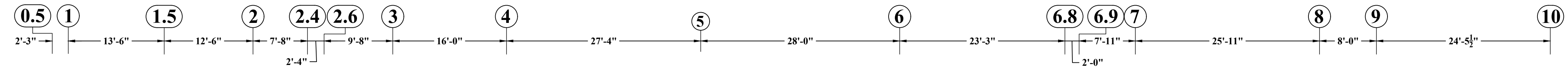
LAP SCHEDULE (CLASS-B)
 REF: S101A

SIZE	5000 PSI	
	TOP	OTHER
#3	22"	17"
#4	29"	22"
#5	36"	28"
#6	43"	33"
#7	63"	49"
#8	72"	55"
#9	81"	63"
#10	91"	70"

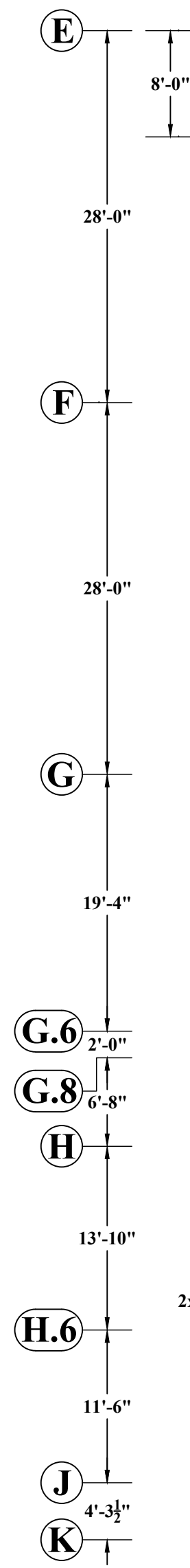
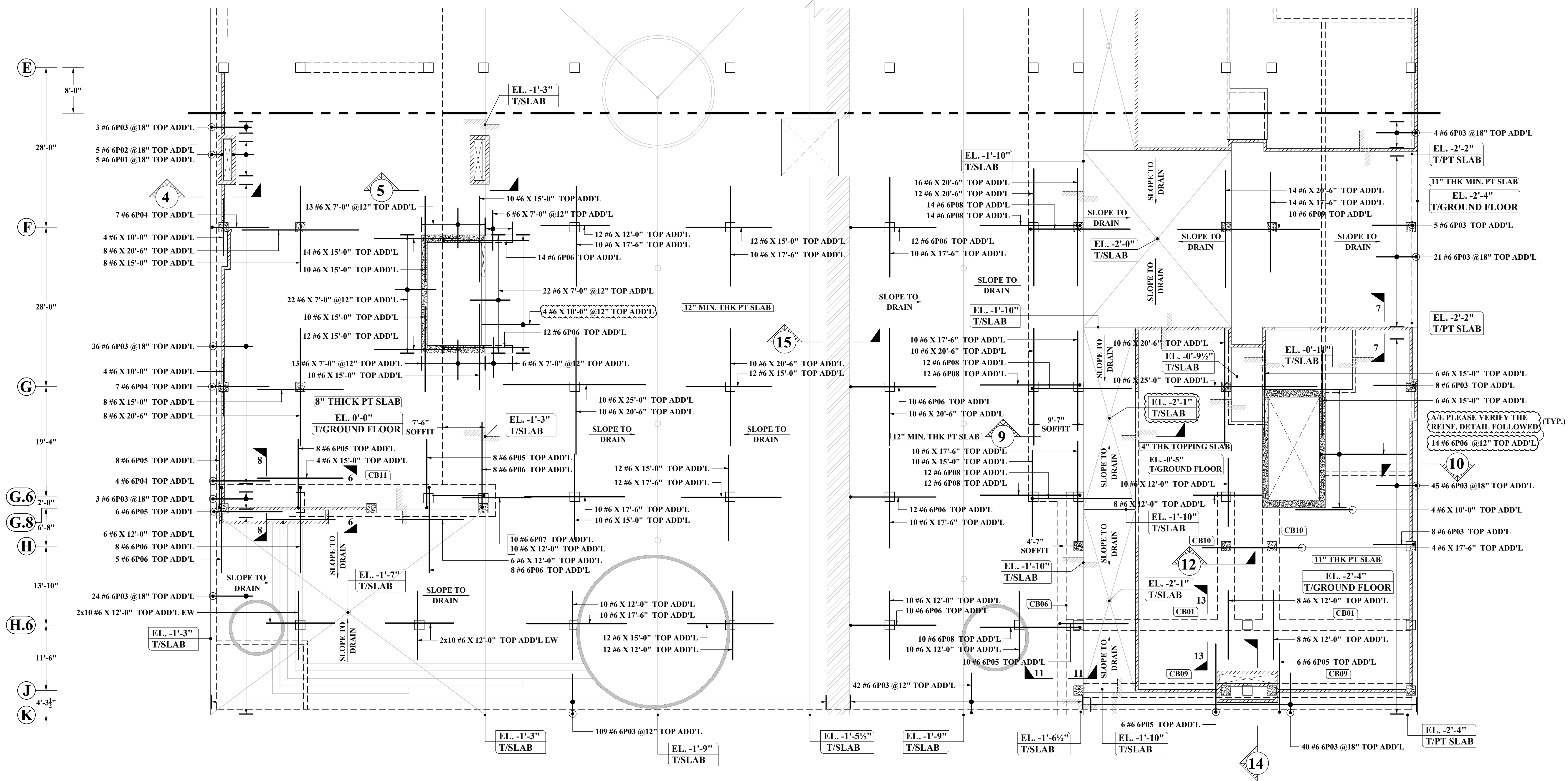
- NOTES:-**
- TYPICAL CLEARANCES
 A). INTERIOR TOP - 3/4"
 B). EXTERIOR TOP - 1"
 C). BOTTOM - 3/4"
 - A/E PLEASE VERIFY THE ALL CLOUED ITEMS
 - PROVIDE FIELD CUT AS REQUIRED LOCATIONS
 - BAR TO BE PLACED AT EQUAL SPACING U.O.N.
 - TILT HOOK TO ACCOMMODATE THE COVER, IF NEED

ALL BARS IN THIS DRAWING ASTM A615 GRADE 60 BLACK UNCOATED

NOTE: REINFORCING STEEL PLACING DRAWINGS TO BE USED ONLY IN CONJUNCTION WITH CONTRACT DRAWINGS AND SPECIFICATIONS. ELEVATIONS & DIMENSIONS SHOWN ON THIS DRAWING ARE FOR VERIFICATION BY THE EOR OR FOR DETAILING PURPOSES ONLY AND SHOULD NOT BE USED FOR CONSTRUCTION UNLESS VERIFIED BY THE ARCHITECT, ENGINEER OF RECORD, OR CONTRACTOR.

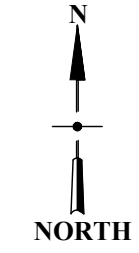


FOR CONTINUATION PT SLAB (NORTH) DRAWINGS



(TOP ADDITIONAL REINFORCEMENT DETAILS ONLY)
PT SLAB REINFORCEMENT DETAILS GROUND FLOOR : SOUTH
 SCALE : 1/10"=1'-0"
 REF : S201FS,S201MS,S201PS,A200S & A211S

A/E PLEASE CONFIRM ALL TOP ADDITIONAL REINF. WE PROVIDE STANDARD HOOK, TILT HOOK AS REQUIRED TO ACCOMMODATE COVER.



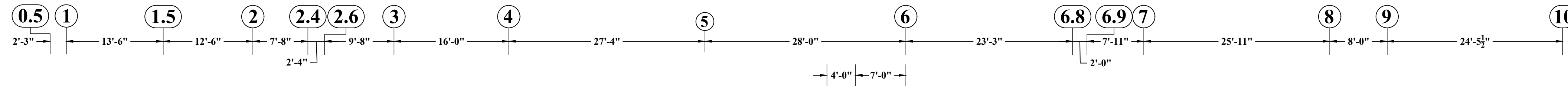
ABBREVIATIONS	
TOP	-
BOTTOM	BOT
TOP&BOTTOM	T&B
CONTINUOUS	CONT
FACE BAR	-
CORNER BAR	COR
VERTICAL	VERT
HORIZONTAL	HOR
STIRRUPS	STIRR
EACH WAY	EW
EACH FACE	EF
INNER FACE	IF
OUTER FACE	OF
EACH SIDE	ES
MASONRY	M
DOWEL	DWL
DOWEL/VERTICAL	D/V
TRANSVERSE	TRANS
LONG WAY BAR	LW
SHORT WAY BAR	SW

LAP SCHEDULE (CLASS-B) REF: S101A		
SIZE	5000 PSI	
	TOP	OTHER
#3	22"	17"
#4	29"	22"
#5	36"	28"
#6	43"	33"
#7	63"	49"
#8	72"	55"
#9	81"	63"
#10	91"	70"

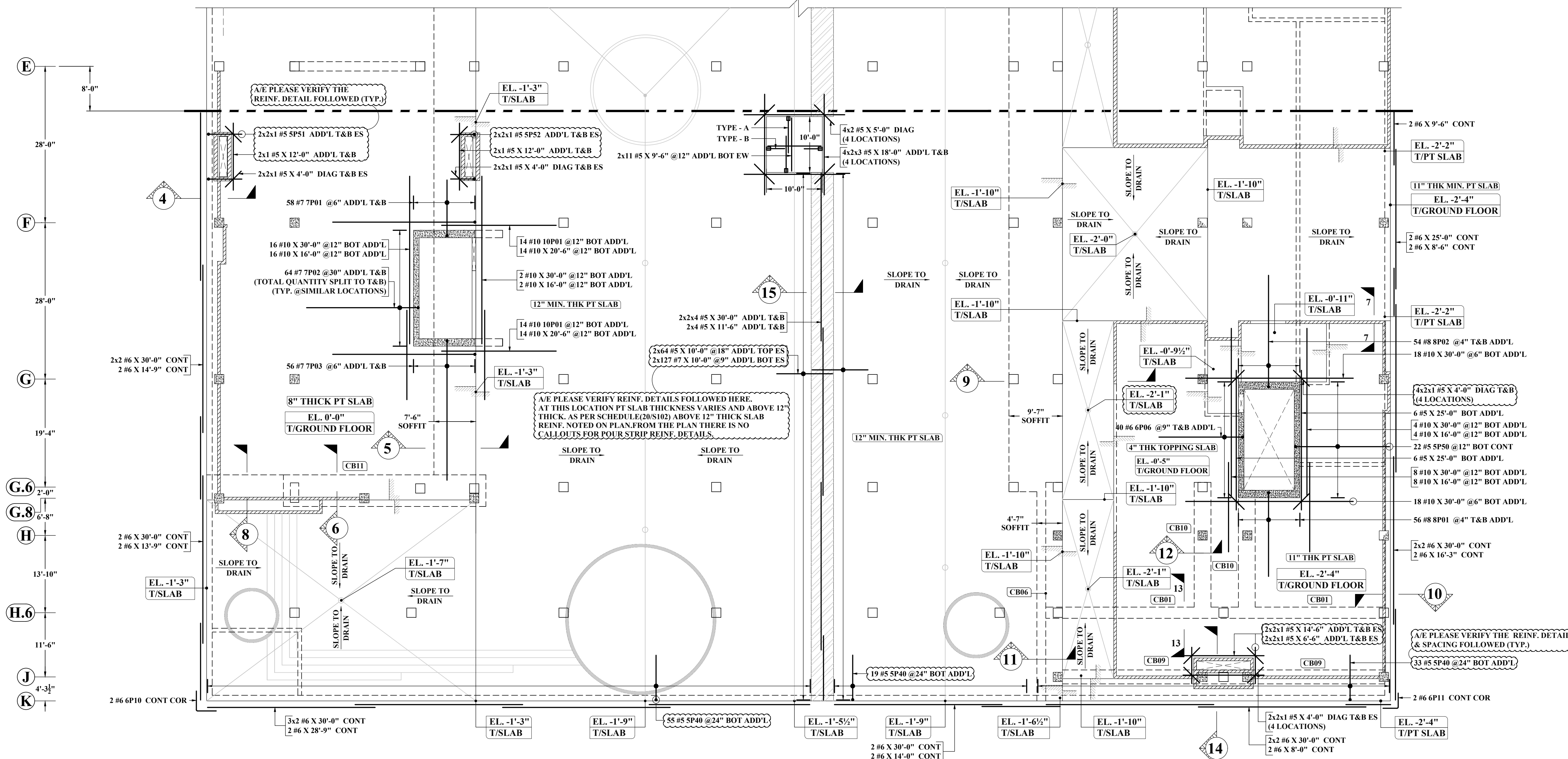
- NOTES:-**
- TYPICAL CLEARANCES
 A). INTERIOR TOP - 3/4"
 B). EXTERIOR TOP - 1"
 C). BOTTOM - 3/4"
 - A/E PLEASE VERIFY THE ALL CLOUED ITEMS
 - PROVIDE FIELD CUT AS REQUIRED LOCATIONS
 - BAR TO BE PLACED AT EQUAL SPACING U.O.N.
 - TILT HOOK TO ACCOMMODATE THE COVER, IF NEED

ALL BARS IN THIS DRAWING ASTM A615 GRADE 60 BLACK UNCOATED

NOTE: REINFORCING STEEL PLACING DRAWINGS TO BE USED ONLY IN CONJUNCTION WITH CONTRACT DRAWINGS AND SPECIFICATIONS. ELEVATIONS & DIMENSIONS SHOWN ON THIS DRAWING ARE FOR VERIFICATION BY THE EOR OR FOR DETAILING PURPOSES ONLY AND SHOULD NOT BE USED FOR CONSTRUCTION UNLESS VERIFIED BY THE ARCHITECT, ENGINEER OF RECORD, OR CONTRACTOR.

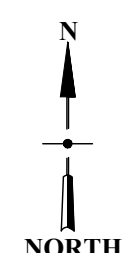


FOR CONTINUATION PT SLAB (NORTH) DRAWINGS



(OPEN, T&B AND POUR STRIP ADDITIONAL REINFORCEMENT DETAILS ONLY)
PT SLAB REINFORCEMENT DETAILS GROUND FLOOR : SOUTH

SCALE : 1/10"=1'-0"
REF : S201FS,S201MS,S201PS,A200S & A211S



FORM SAVER SCHEDULE				
FEMALE COUPLER@ WELDED TO PLATE				
TYPE	NOS.	REINFORCEMENT	SKETCHES	REMARK
TYPE-A	44	2x2x11 #5 X 6'-6" @12" TOP EW ES (F) (WELDED TO PLATE)		REFER SECTION - 16
TYPE-B	44	2x2x11 #5 X 3'-3" @12" BOT EW ES (F) (WELDED TO PLATE)		

A/E PLEASE CONFIRM FORM SAVER REINFORCEMENT DETAILS WE FOLLOWED FEMALE COUPLERS WELDED TO PLATE

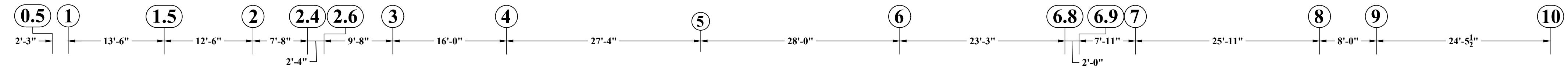
ABBREVIATIONS	
TOP	-
BOTTOM	BOT
TOP&BOTTOM	T&B
CONTINUOUS	CONT
FACE BAR	-
CORNER BAR	COR
VERTICAL	VERT
HORIZONTAL	HOR
STIRRUPS	STIRR
EACH WAY	EW
EACH FACE	EF
INNER FACE	IF
OUTER FACE	OF
EACH SIDE	ES
MASONRY	M
DOWEL	DWL
DOWEL/VERTICAL	D/V
TRANSVERSE	TRANS
LONG WAY BAR	LW
SHORT WAY BAR	SW

LAP SCHEDULE (CLASS-B)		
REF: S101A		
SIZE	5000 PSI	
	TOP	OTHER
#3	22"	17"
#4	29"	22"
#5	36"	28"
#6	43"	33"
#7	63"	49"
#8	72"	55"
#9	81"	63"
#10	91"	70"

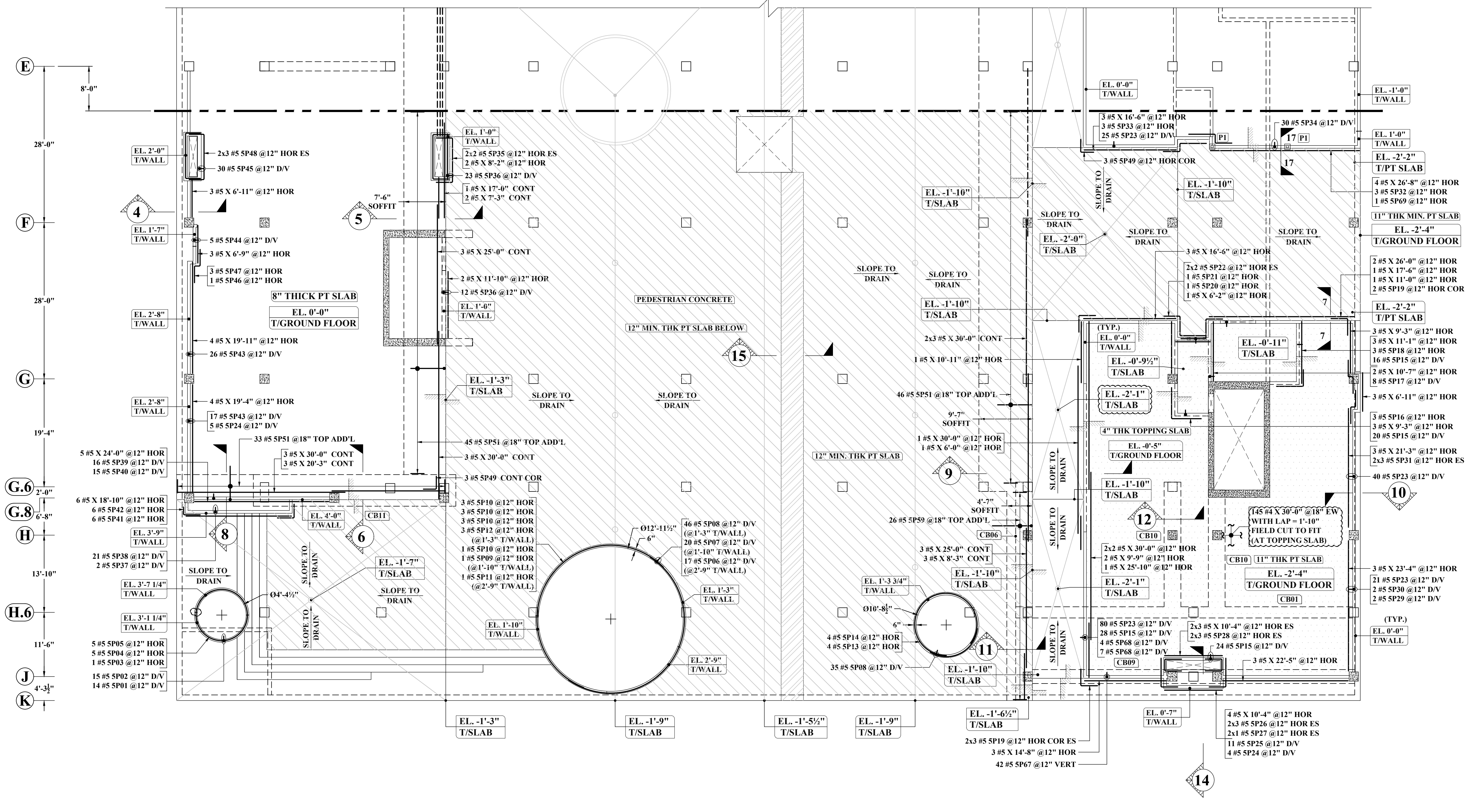
- NOTES:-**
- TYPICAL CLEARANCES
A). INTERIOR TOP - 3/4"
B). EXTERIOR TOP - 1"
C). BOTTOM - 3/4"
 - A/E PLEASE VERIFY THE ALL CLOUDED ITEMS
 - PROVIDE FIELD CUT AS REQUIRED LOCATIONS
 - BAR TO BE PLACED AT EQUAL SPACING U.O.N.
 - TILT HOOK TO ACCOMMODATE THE COVER, IF NEED

ALL BARS IN THIS DRAWING ASTM A615 GRADE 60 BLACK UNCOATED

NOTE: REINFORCING STEEL PLACING DRAWINGS TO BE USED ONLY IN CONJUNCTION WITH CONTRACT DRAWINGS AND SPECIFICATIONS. ELEVATIONS & DIMENSIONS SHOWN ON THIS DRAWING ARE FOR VERIFICATION BY THE EOR OR FOR DETAILING PURPOSES ONLY AND SHOULD NOT BE USED FOR CONSTRUCTION UNLESS VERIFIED BY THE ARCHITECT, ENGINEER OF RECORD, OR CONTRACTOR.

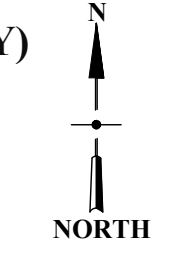


FOR CONTINUATION PT SLAB (NORTH) DRAWINGS



(TOPPING SLAB, SOFFIT ADDITIONAL & POUR STRIP REINFORCEMENT DETAILS ONLY)
PT SLAB REINFORCEMENT DETAILS GROUND FLOOR : SOUTH

SCALE : 1/10"=1'-0"
 REF : S201FS,S201MS,S201PS,A200S & A211S



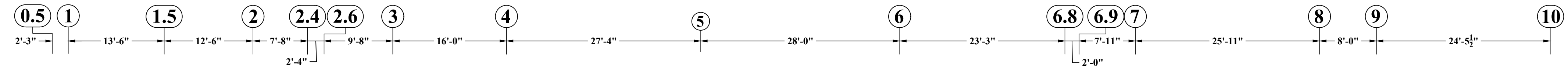
ABBREVIATIONS	
TOP	-
BOTTOM	BOT
TOP&BOTTOM	T&B
CONTINUOUS	CONT
FACE BAR	-
CORNER BAR	COR
VERTICAL	VERT
HORIZONTAL	HOR
STIRRUPS	STIRR
EACH WAY	EW
EACH FACE	EF
INNER FACE	IF
OUTER FACE	OF
EACH SIDE	ES
MASONRY	M
DOWEL	DWL
DOWEL/VERTICAL	D/V
TRANSVERSE	TRANS
LONG WAY BAR	LW
SHORT WAY BAR	SW

LAP SCHEDULE (CLASS-B) REF: S101A		
SIZE	5000 PSI	
	TOP	OTHER
#3	22"	17"
#4	29"	22"
#5	36"	28"
#6	43"	33"
#7	63"	49"
#8	72"	55"
#9	81"	63"
#10	91"	70"

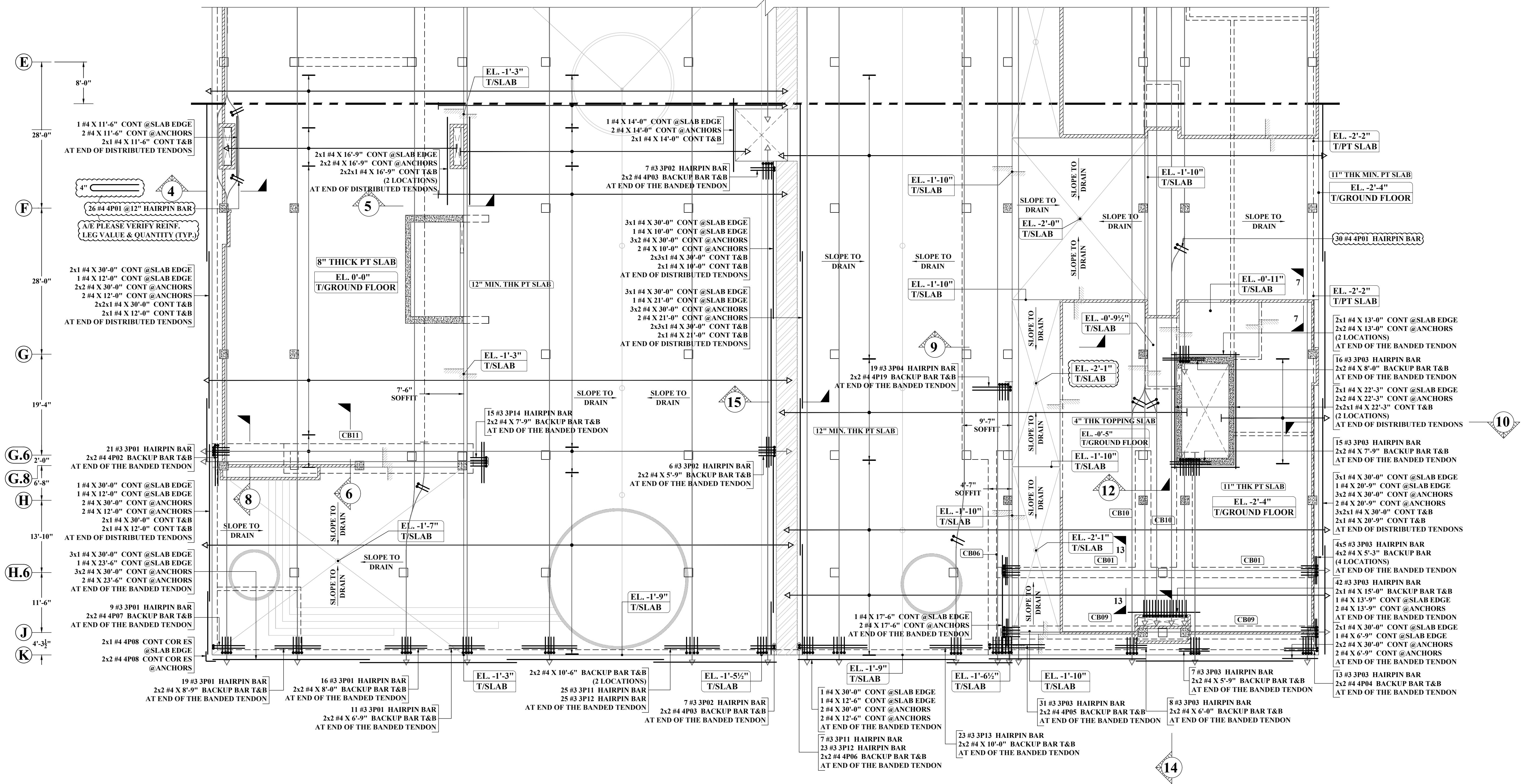
- NOTES:-**
- TYPICAL CLEARANCES
 A). INTERIOR TOP - 3/4"
 B). EXTERIOR TOP - 1"
 C). BOTTOM - 3/4"
 - A/E PLEASE VERIFY THE ALL CLOUDED ITEMS
 - PROVIDE FIELD CUT AS REQUIRED LOCATIONS
 - BAR TO BE PLACED AT EQUAL SPACING U.O.N.
 - TILT HOOK TO ACCOMMODATE THE COVER, IF NEED

ALL BARS IN THIS DRAWING ASTM A615 GRADE 60 BLACK UNCOATED

NOTE: REINFORCING STEEL PLACING DRAWINGS TO BE USED ONLY IN CONJUNCTION WITH CONTRACT DRAWINGS AND SPECIFICATIONS. ELEVATIONS & DIMENSIONS SHOWN ON THIS DRAWING ARE FOR VERIFICATION BY THE EOR OR FOR DETAILING PURPOSES ONLY AND SHOULD NOT BE USED FOR CONSTRUCTION UNLESS VERIFIED BY THE ARCHITECT, ENGINEER OF RECORD, OR CONTRACTOR.

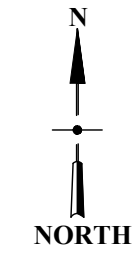


FOR CONTINUATION PT SLAB (NORTH) DRAWINGS



(TENDON ADDITIONAL REINFORCEMENT DETAILS ONLY)

A/E PLEASE PROVIDE TENDONS QUANTITY
PT SLAB REINFORCEMENT DETAILS GROUND FLOOR : SOUTH
 SCALE : 1/10"=1'-0"
 REF : S201FS,S201MS,S201PS,A200S & A211S



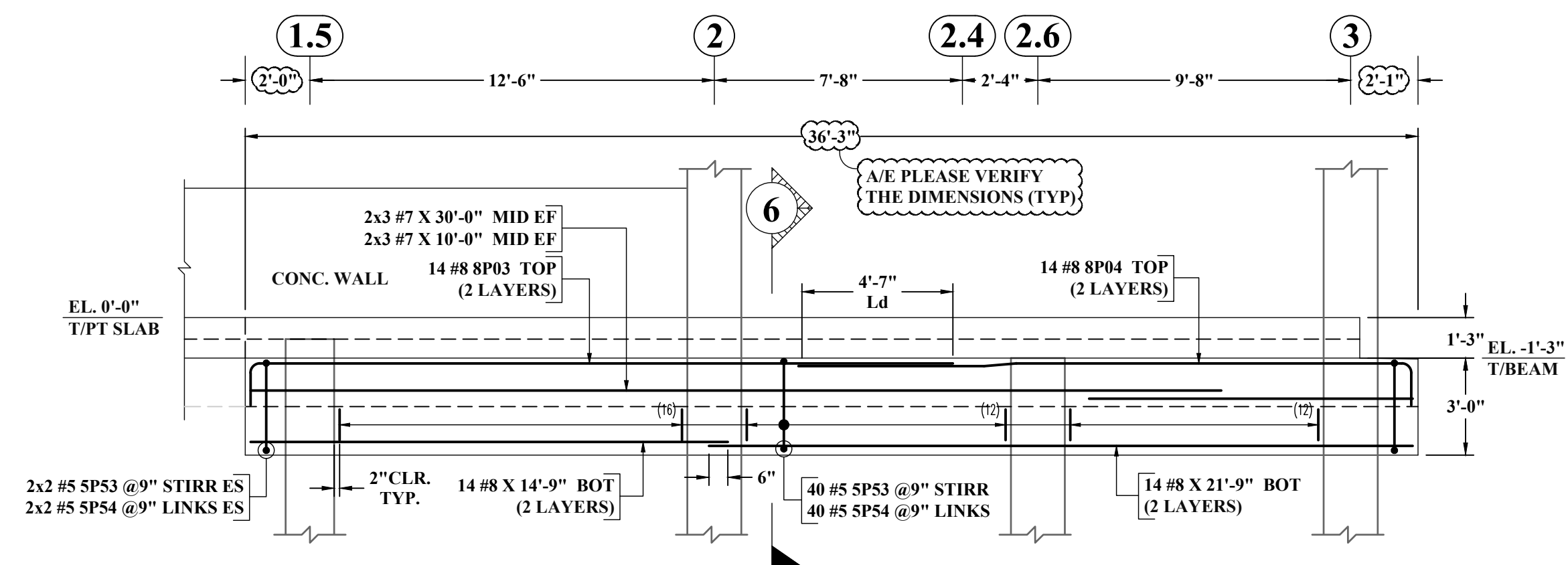
ABBREVIATIONS	
TOP	-
BOTTOM	BOT
TOP&BOTTOM	T&B
CONTINUOUS	CONT
FACE BAR	-
CORNER BAR	COR
VERTICAL	VERT
HORIZONTAL	HOR
STIRRUPS	STIRR
EACH WAY	EW
EACH FACE	EF
INNER FACE	IF
OUTER FACE	OF
EACH SIDE	ES
MASONRY	M
DOWEL	DWL
DOWEL/VERTICAL	D/V
TRANSVERSE	TRANS
LONG WAY BAR	LW
SHORT WAY BAR	SW

LAP SCHEDULE (CLASS-B) REF: S101A		
SIZE	5000 PSI	
	TOP	OTHER
#3	22"	17"
#4	29"	22"
#5	36"	28"
#6	43"	33"
#7	63"	49"
#8	72"	55"
#9	81"	63"
#10	91"	70"

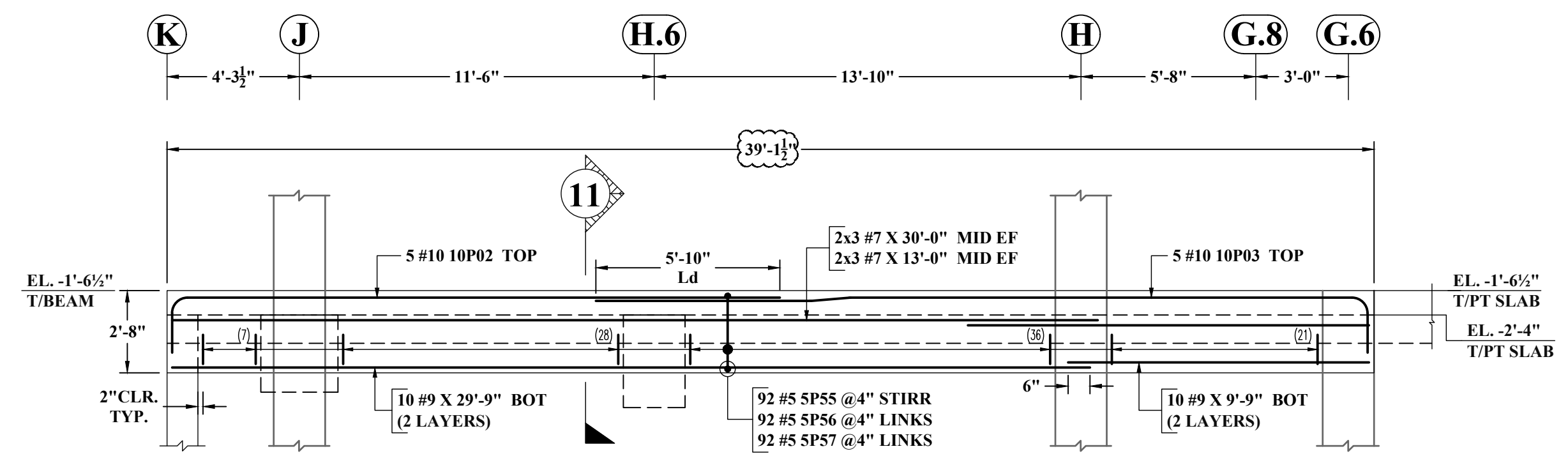
- NOTES:-**
- TYPICAL CLEARANCES
 A). INTERIOR TOP - 3/4"
 B). EXTERIOR TOP - 1"
 C). BOTTOM - 3/4"
 - A/E PLEASE VERIFY THE ALL CLOUDED ITEMS
 - PROVIDE FIELD CUT AS REQUIRED LOCATIONS
 - BAR TO BE PLACED AT EQUAL SPACING U.O.N.
 - TILT HOOK TO ACCOMMODATE THE COVER, IF NEED

ALL BARS IN THIS DRAWING ASTM A615 GRADE 60 BLACK UNCOATED

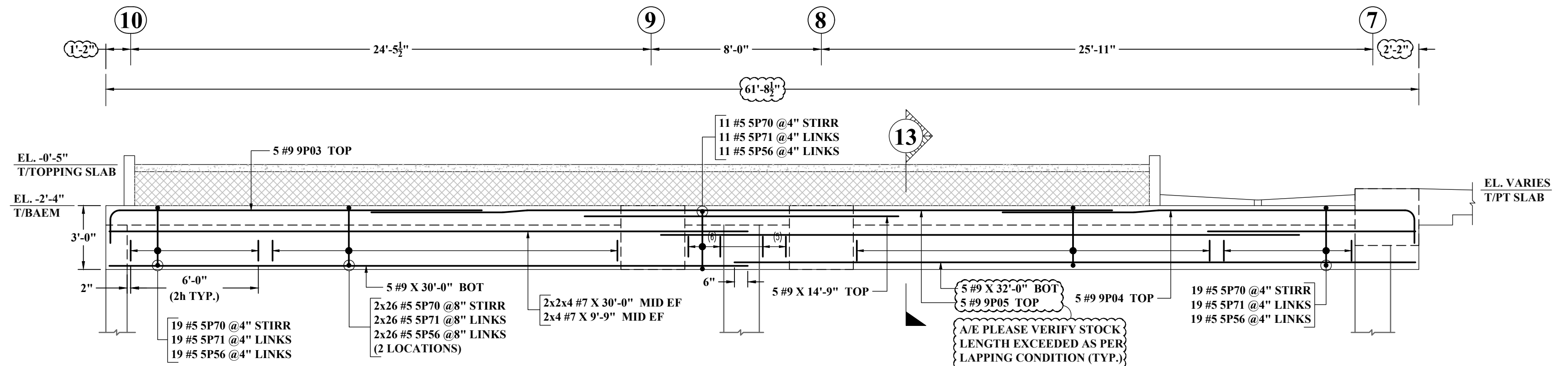
NOTE: REINFORCING STEEL PLACING DRAWINGS TO BE USED ONLY IN CONJUNCTION WITH CONTRACT DRAWINGS AND SPECIFICATIONS. ELEVATIONS & DIMENSIONS SHOWN ON THIS DRAWING ARE FOR VERIFICATION BY THE EOR OR FOR DETAILING PURPOSES ONLY AND SHOULD NOT BE USED FOR CONSTRUCTION UNLESS VERIFIED BY THE ARCHITECT, ENGINEER OF RECORD, OR CONTRACTOR.



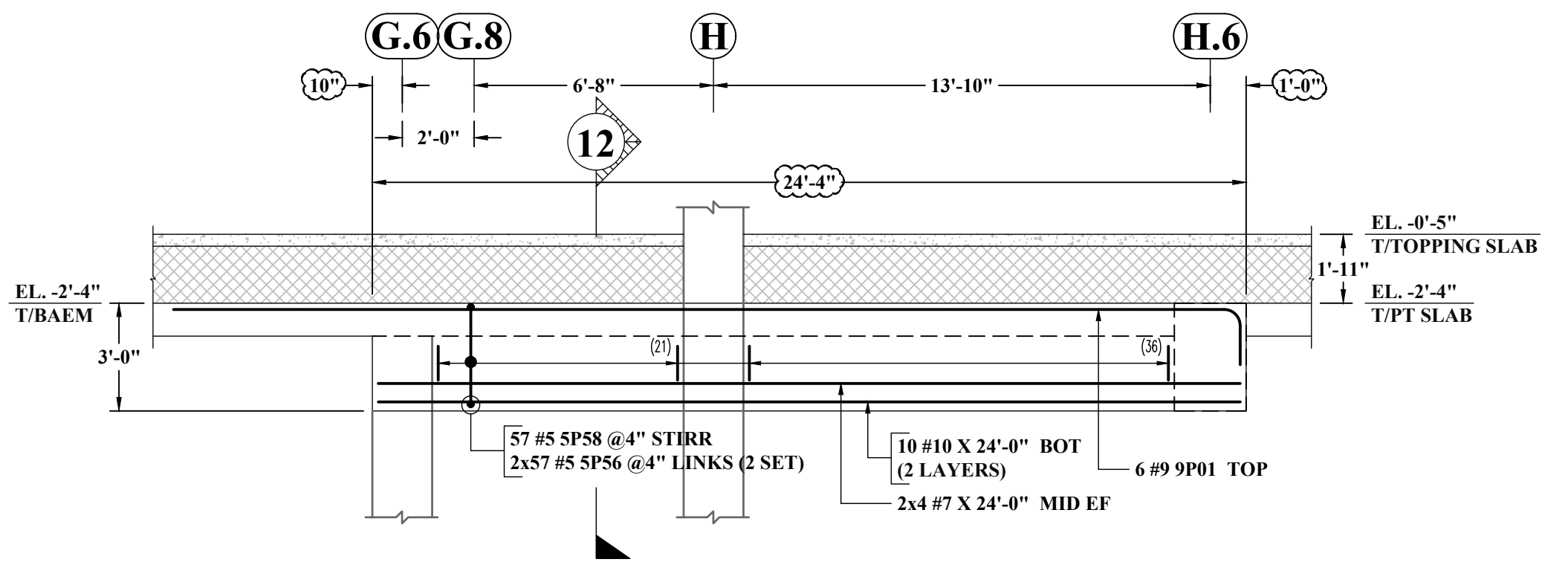
CB11
ELEVATION A
SCALE : 1/4"=1'-0"
REF : S201MS



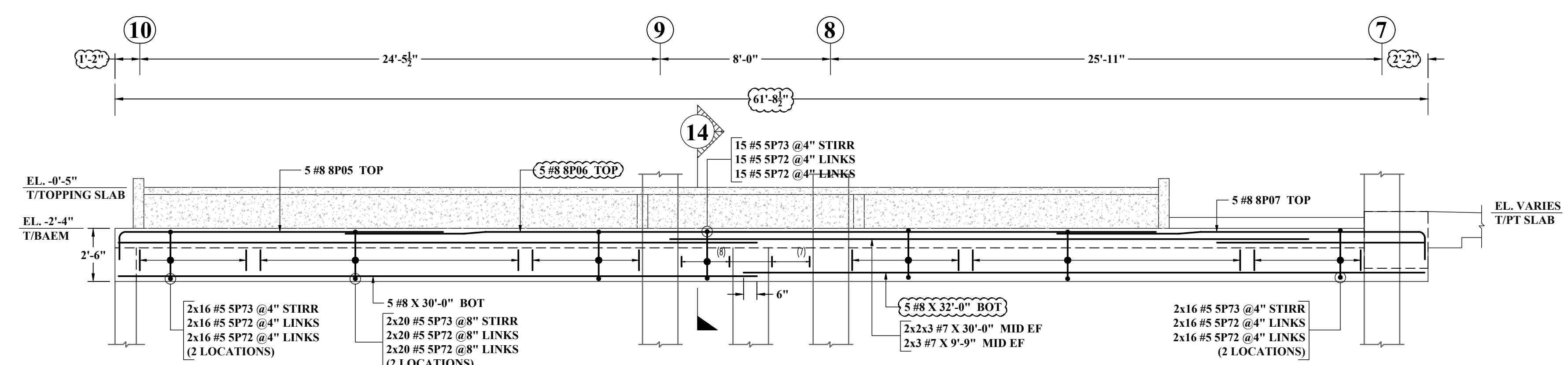
CB06
ELEVATION B
SCALE : 1/4"=1'-0"
REF : S201MS



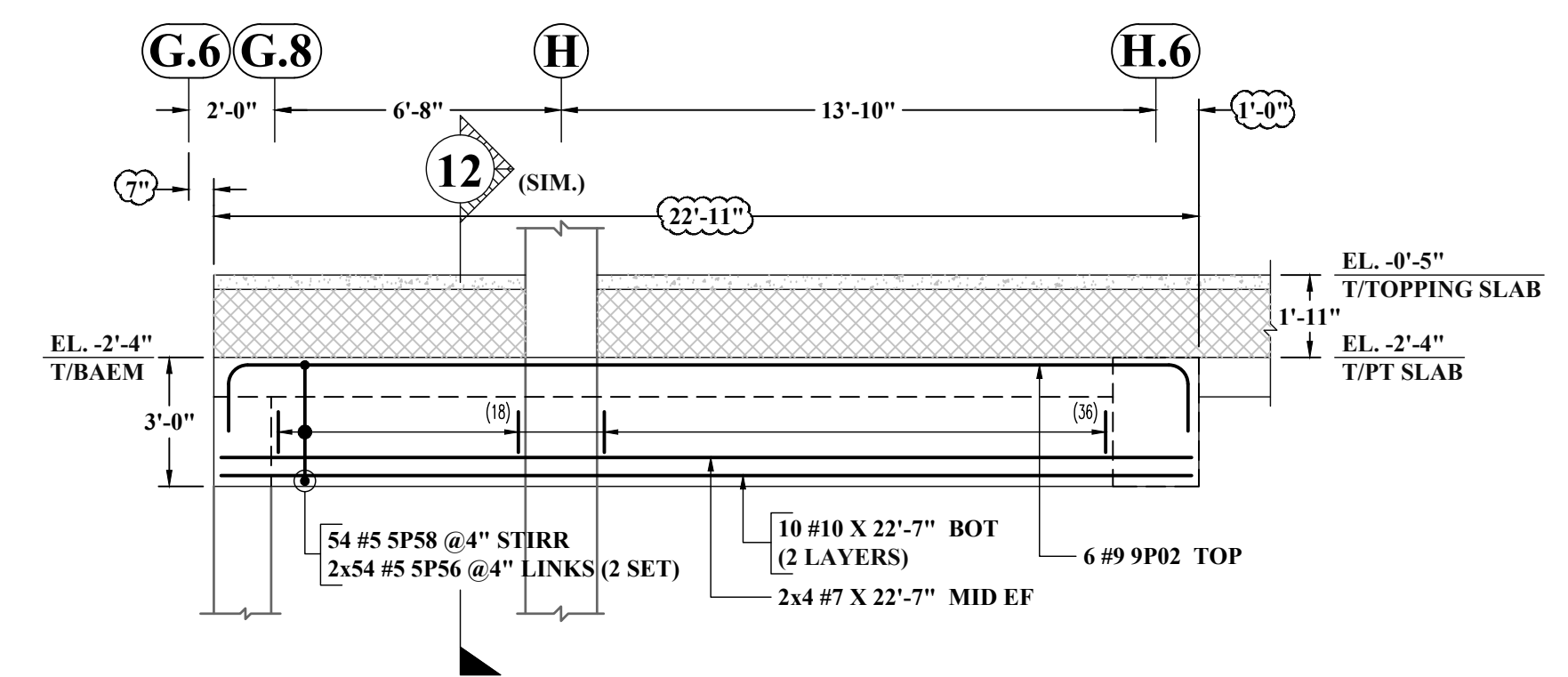
CB01
ELEVATION E
SCALE : 1/4"=1'-0"
REF : S201MS



CB10
ELEVATION C
SCALE : 1/4"=1'-0"
REF : S201MS



CB09
ELEVATION F
SCALE : 1/4"=1'-0"
REF : S201MS



CB10
ELEVATION D
SCALE : 1/4"=1'-0"
REF : S201MS

ABBREVIATIONS	
TOP	-
BOTTOM	BOT
TOP&BOTTOM	T&B
CONTINUOUS	CONT
FACE BAR	-
CORNER BAR	COR
VERTICAL	VERT
HORIZONTAL	HOR
STIRRUPS	STIRR
EACH WAY	EW
EACH FACE	EF
INNER FACE	IF
OUTER FACE	OF
EACH SIDE	ES
MASONRY	M
DOWEL	DWL
DOWEL/VERTICAL	D/V
TRANSVERSE	TRANS
LONG WAY BAR	LW
SHORT WAY BAR	SW

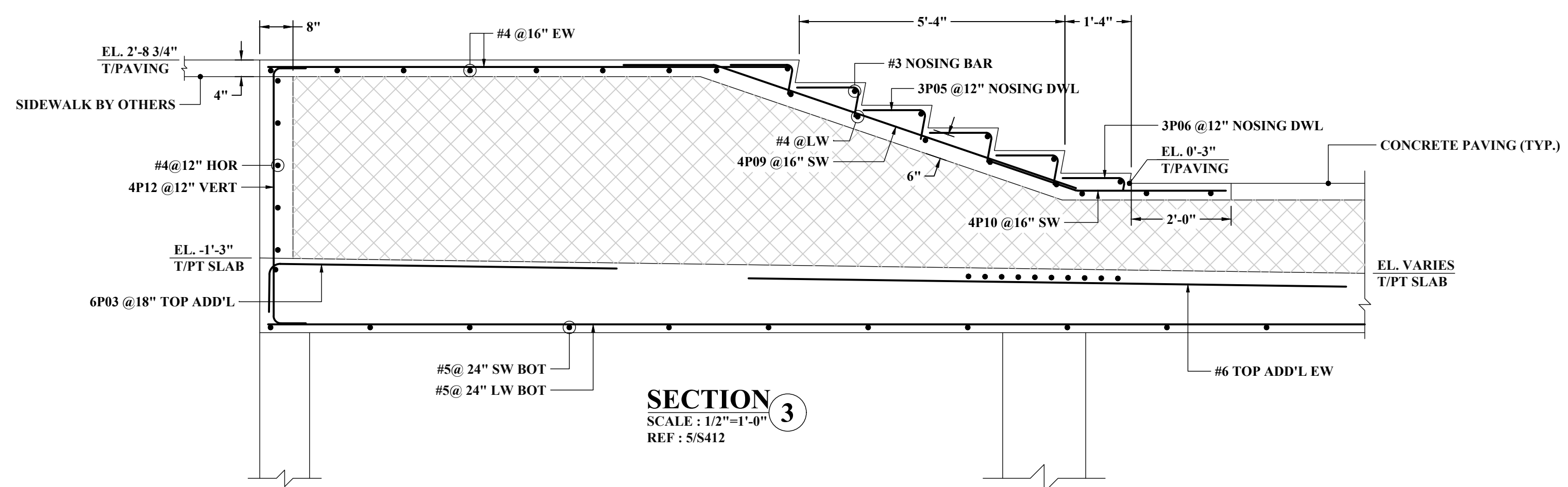
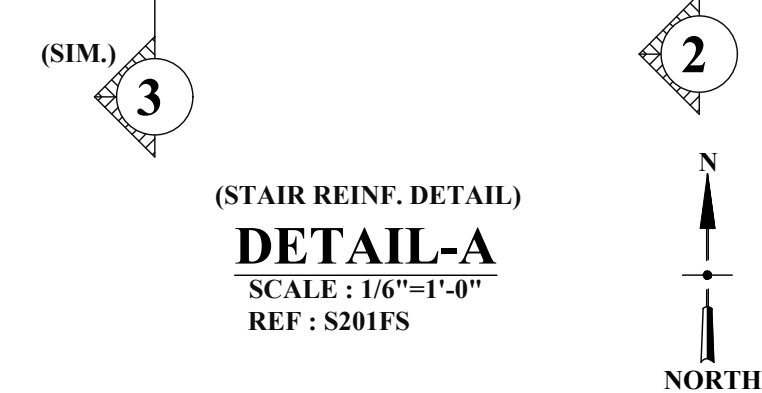
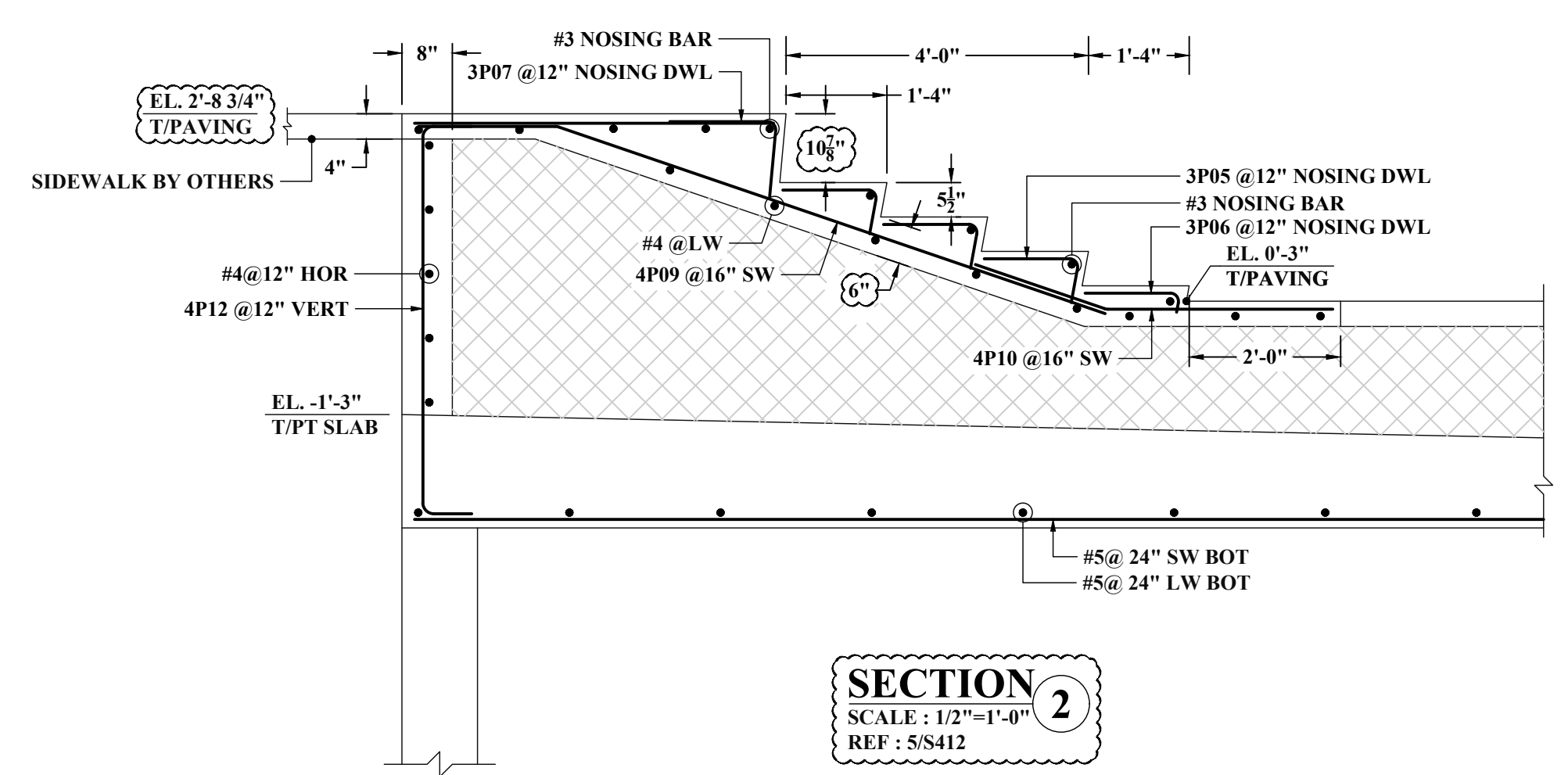
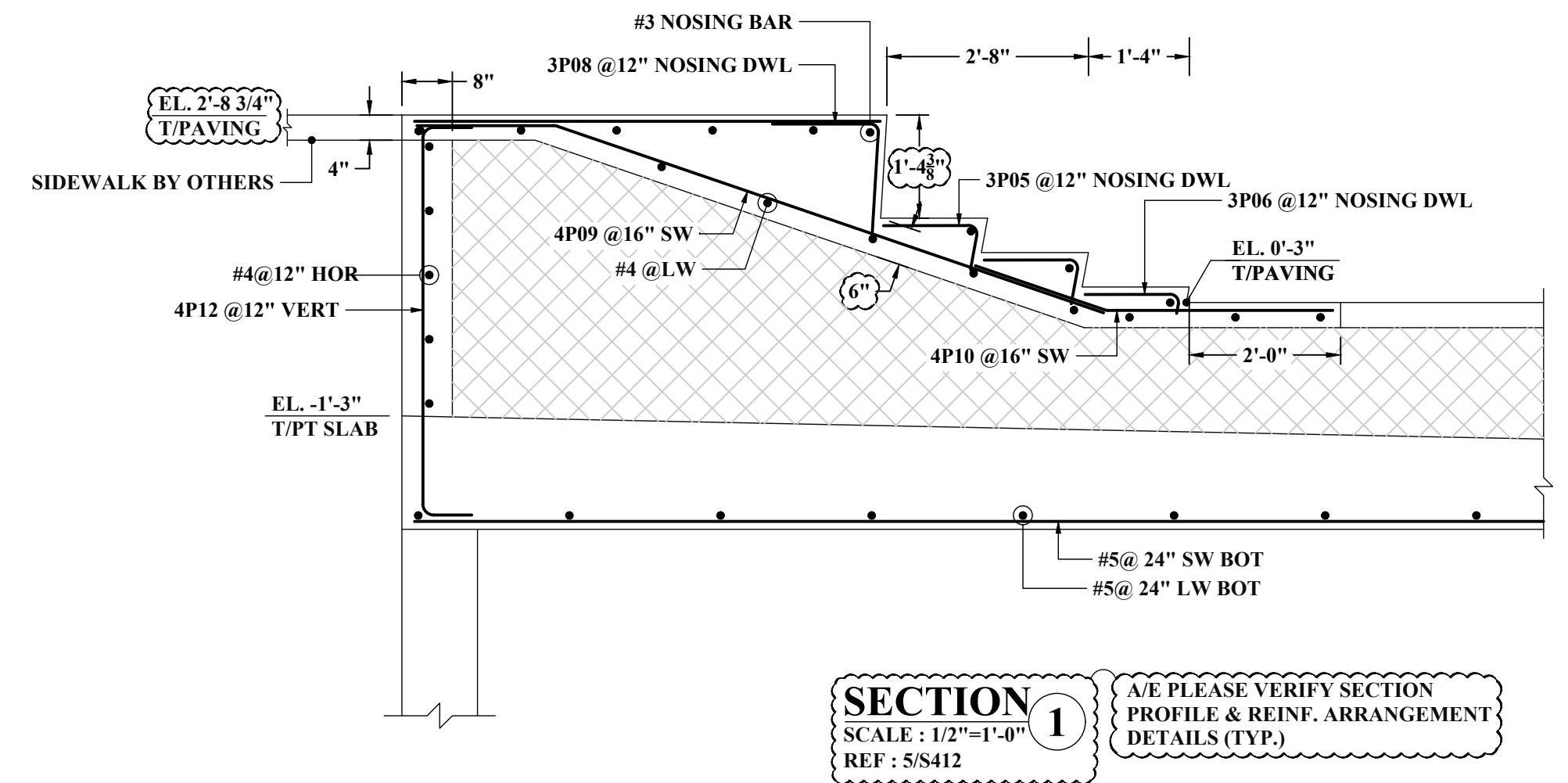
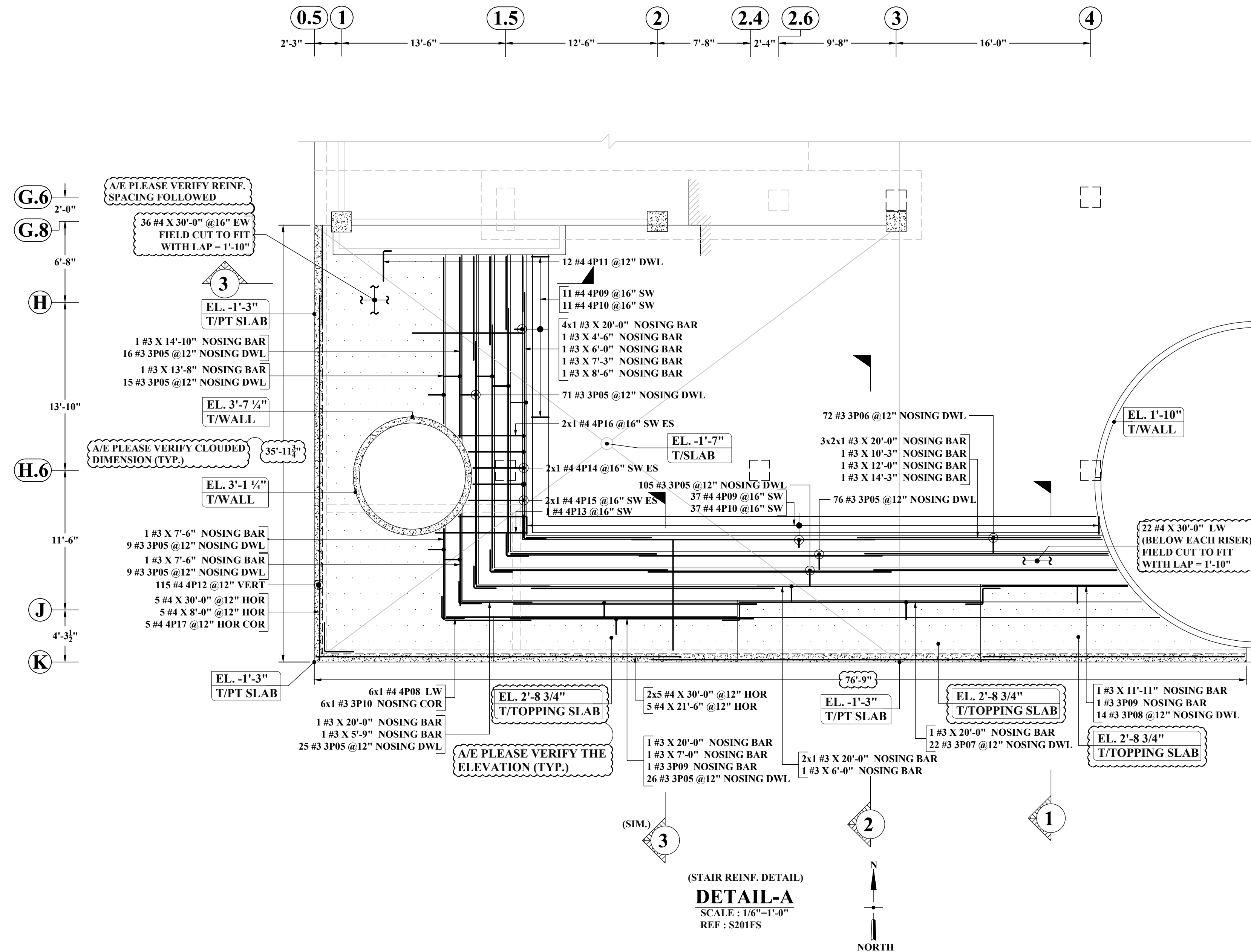
A/E PLEASE VERIFY LAP VALUE FOLLOWED (FOR BEAM)

LAP SCHEDULE (CLASS-B)		REF: S101A	
SIZE	5000 PSI TOP (Ld)	SIZE	5000 PSI OTHER
#3	17"	#3	22"
#4	22"	#4	29"
#5	28"	#5	36"
#6	33"	#6	43"
#7	49"	#7	63"
#8	55"	#8	72"
#9	63"	#9	81"
#10	70"	#10	91"

LAP SCHEDULE (CLASS-B)		REF: S101A	
SIZE	5000 PSI TOP	SIZE	5000 PSI OTHER
#3	17"	#3	22"
#4	22"	#4	29"
#5	28"	#5	36"
#6	33"	#6	43"
#7	49"	#7	63"
#8	55"	#8	72"
#9	63"	#9	81"
#10	70"	#10	91"

- NOTES:-**
1. TYPICAL CLEARANCES
A). INTERIOR TOP - 3/4"
B). EXTERIOR TOP - 1"
C). BOTTOM - 3/4"
 2. A/E PLEASE VERIFY THE ALL CLOUED ITEMS
 3. PROVIDE FIELD CUT AS REQUIRED LOCATIONS
 4. BARS TO BE PLACED AT EQUAL SPACING U.O.N.
 5. TILT HOOK TO ACCOMMODATE THE COVER, IF NEED

ALL BARS IN THIS DRAWING ASTM A615 GRADE 60 BLACK UNCOATED



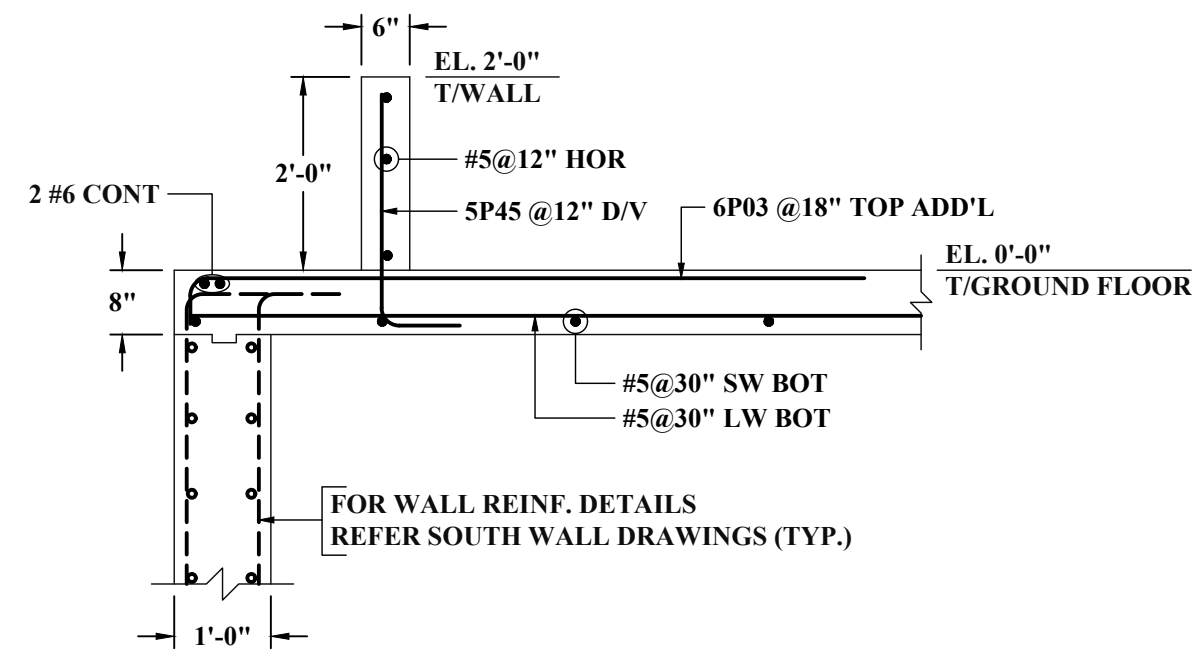
ABBREVIATIONS	
TOP	-
BOTTOM	BOT
TOP&BOTTOM	T&B
CONTINUOUS	CONT
FACE BAR	-
CORNER BAR	COR
VERTICAL	VERT
HORIZONTAL	HOR
STIRRUPS	STIRR
EACH WAY	EW
EACH FACE	EF
INNER FACE	IF
OUTER FACE	OF
EACH SIDE	ES
MASONRY	M
DOWEL	DWL
DOWEL/VERTICAL	D/V
TRANSVERSE	TRANS
LONG WAY BAR	LW
SHORT WAY BAR	SW

LAP SCHEDULE (CLASS-B)		
REF: S101A		
SIZE	5000 PSI	
	TOP	OTHER
#3	22"	17"
#4	29"	22"
#5	36"	28"
#6	43"	33"
#7	63"	49"
#8	72"	55"
#9	81"	63"
#10	91"	70"

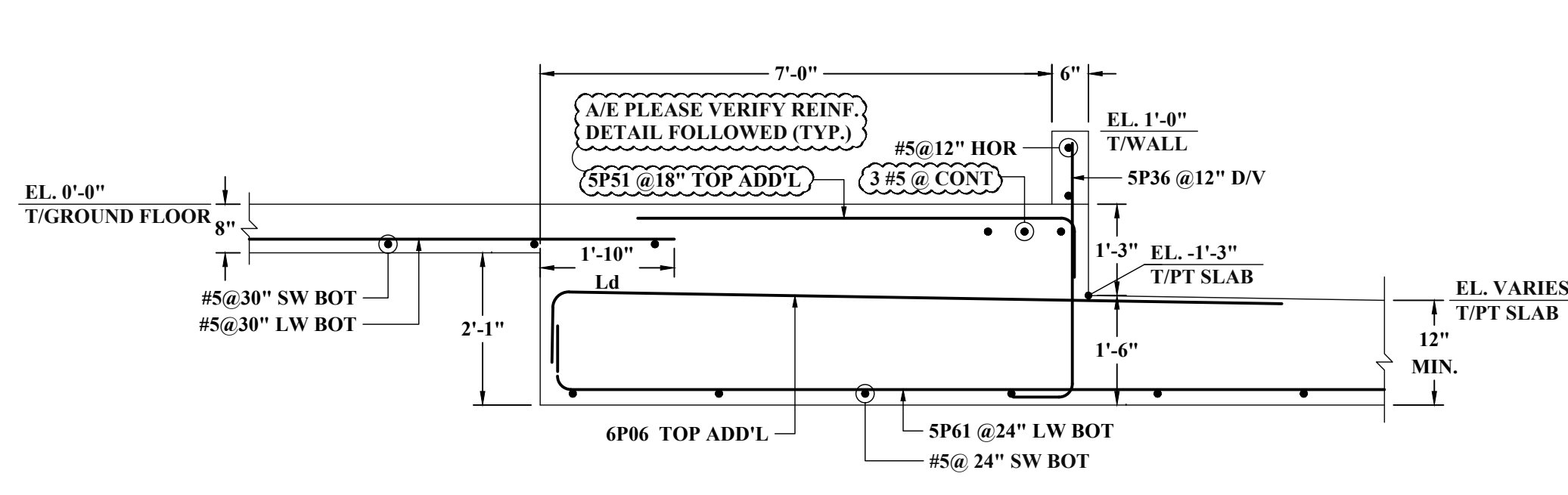
- NOTES:-**
- TYPICAL CLEARANCES
 - INTERIOR TOP - 3/4"
 - EXTERIOR TOP - 1"
 - BOTTOM - 3/4"
 - A/E PLEASE VERIFY THE ALL CLOUED ITEMS
 - PROVIDE FIELD CUT AS REQUIRED LOCATIONS
 - BAR TO BE PLACED AT EQUAL SPACING U.O.N.
 - TILT HOOK TO ACCOMMODATE THE COVER, IF NEED

ALL BARS IN THIS DRAWING ASTM A615 GRADE 60 BLACK UNCOATED

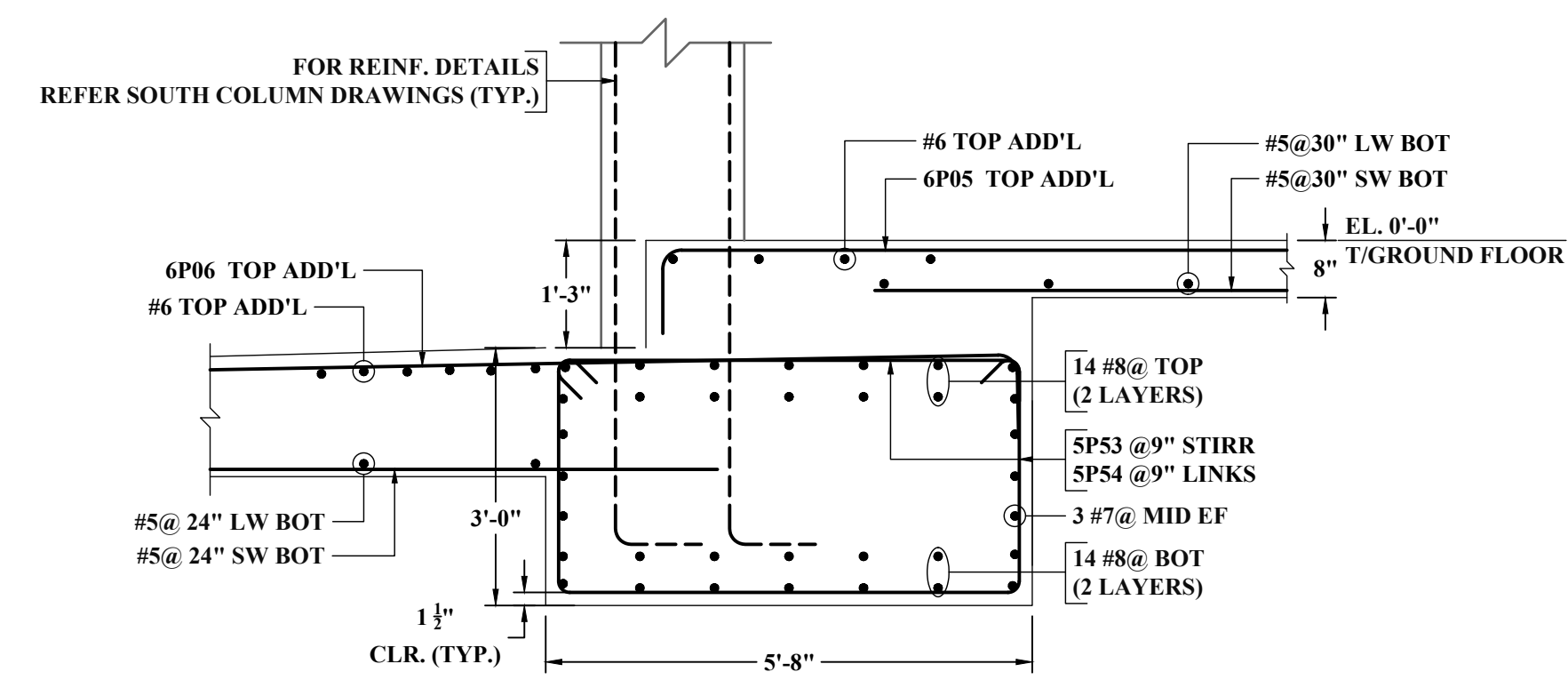
NOTE: REINFORCING STEEL PLACING DRAWINGS TO BE USED ONLY IN CONJUNCTION WITH CONTRACT DRAWINGS AND SPECIFICATIONS. ELEVATIONS & DIMENSIONS SHOWN ON THIS DRAWING ARE FOR VERIFICATION BY THE EOR OR FOR DETAILING PURPOSES ONLY AND SHOULD NOT BE USED FOR CONSTRUCTION UNLESS VERIFIED BY THE ARCHITECT, ENGINEER OF RECORD, OR CONTRACTOR.



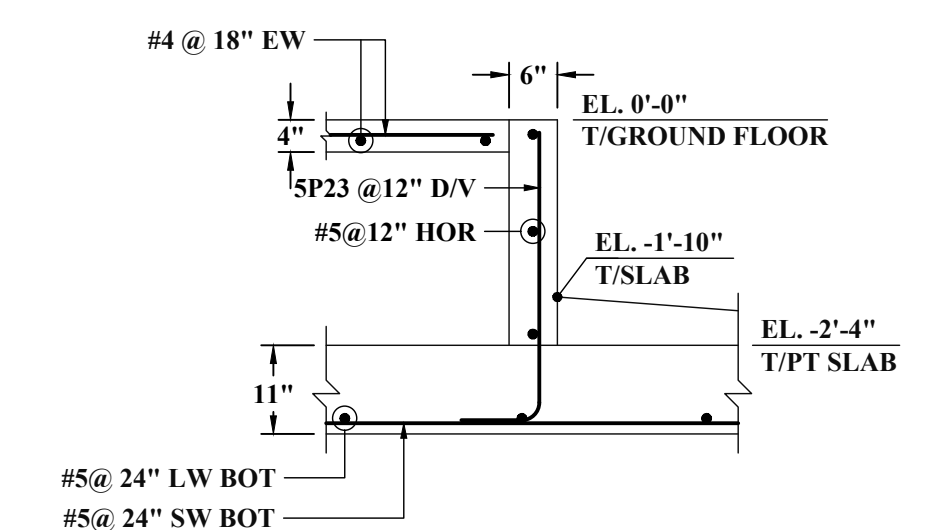
SECTION 4
SCALE: 1/2"=1'-0"
REF: 4/S412



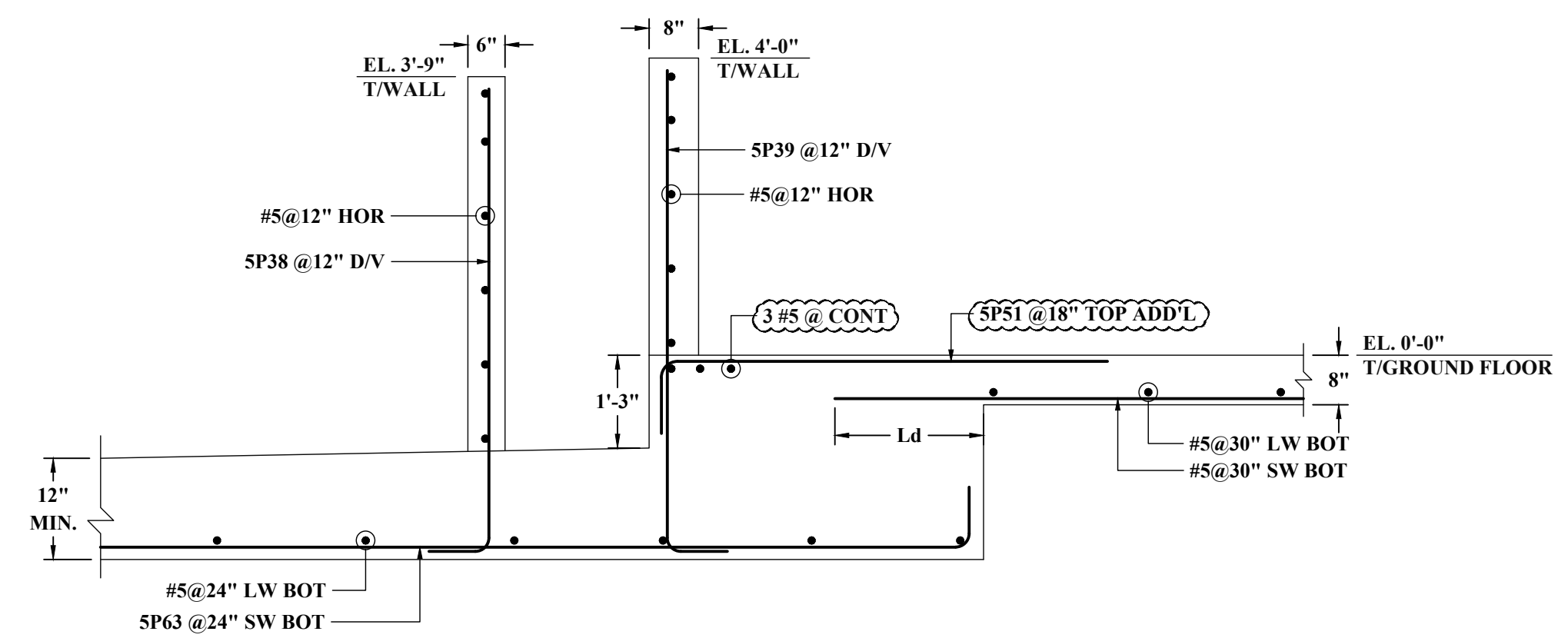
SECTION 5
SCALE: 1/2"=1'-0"
REF: 4/S412



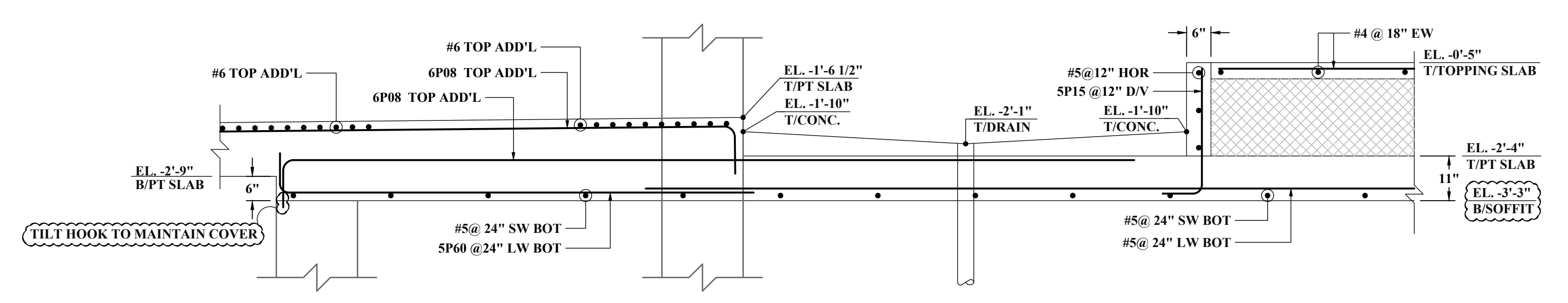
SECTION 6
SCALE: 1/2"=1'-0"
REF: 13/412



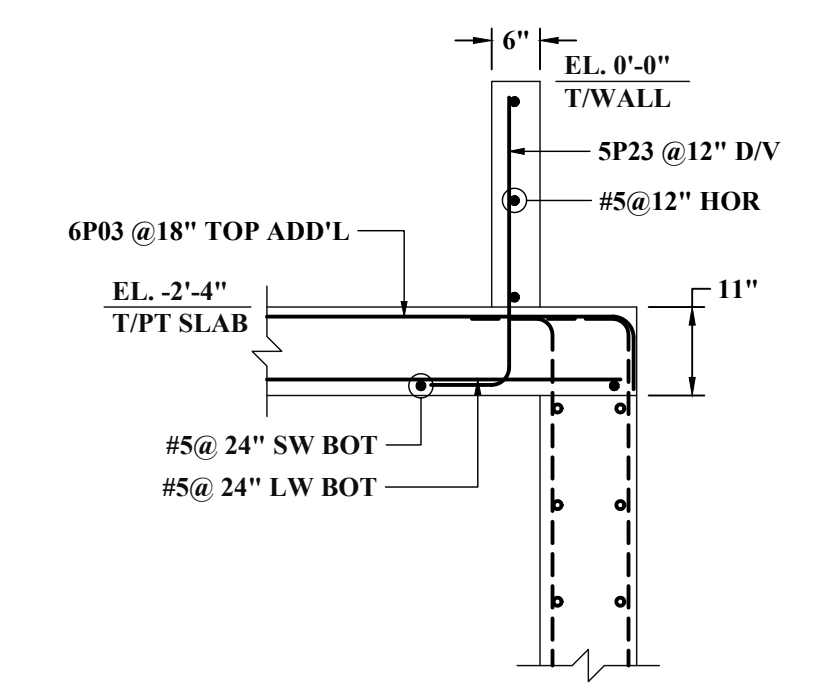
SECTION 7
SCALE: 1/2"=1'-0"
REF: 9/S411



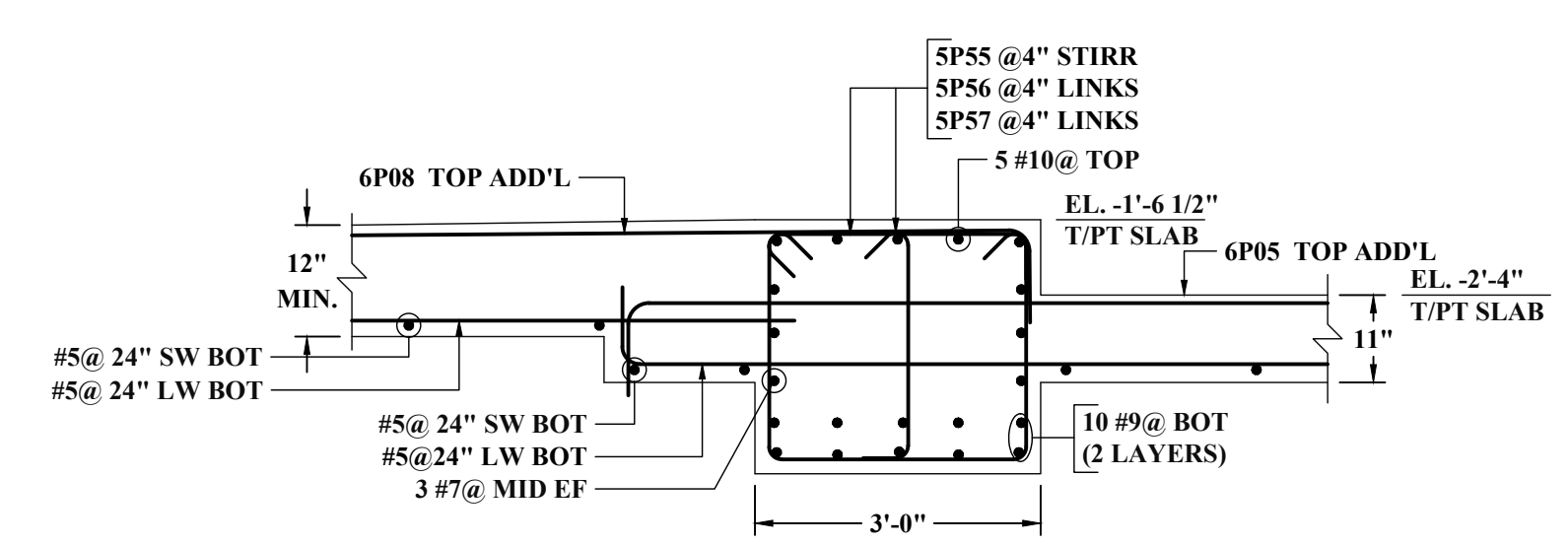
SECTION 8
SCALE: 1/2"=1'-0"
REF: 1/S413



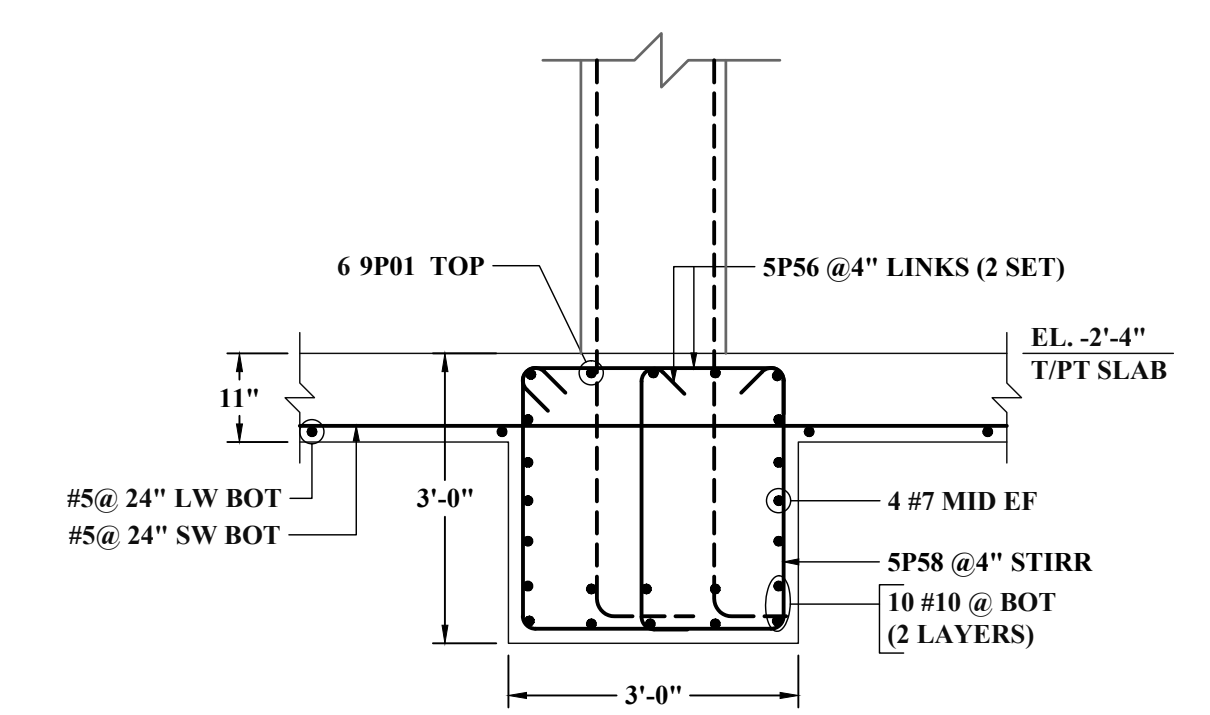
SECTION 9
SCALE: 1/2"=1'-0"
REF: 6 & 14/S412



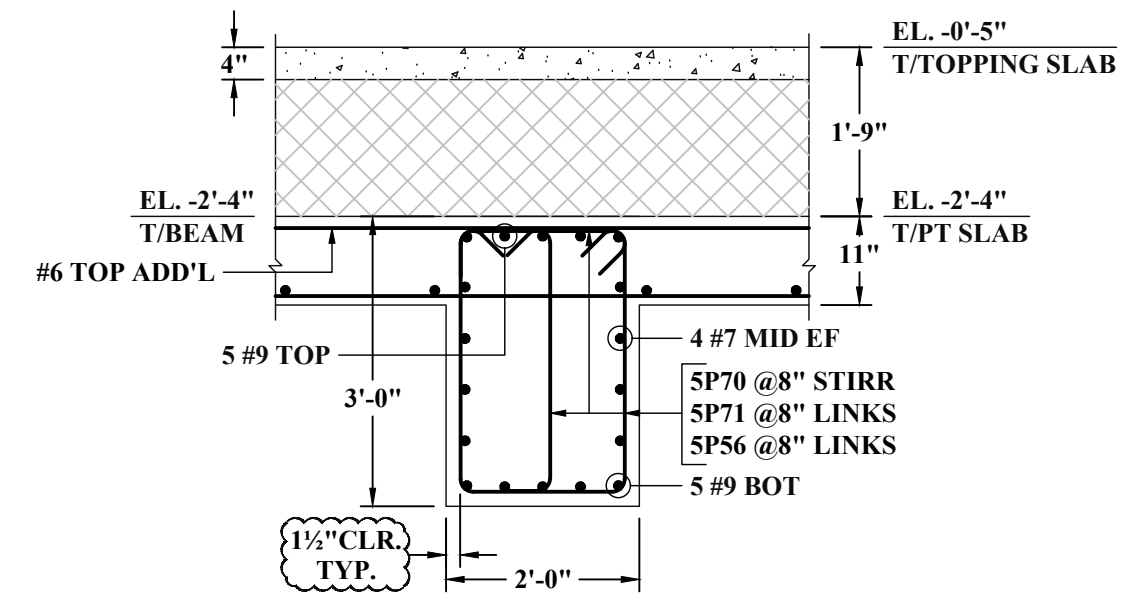
SECTION 10
SCALE: 1/2"=1'-0"
REF: 12/S411



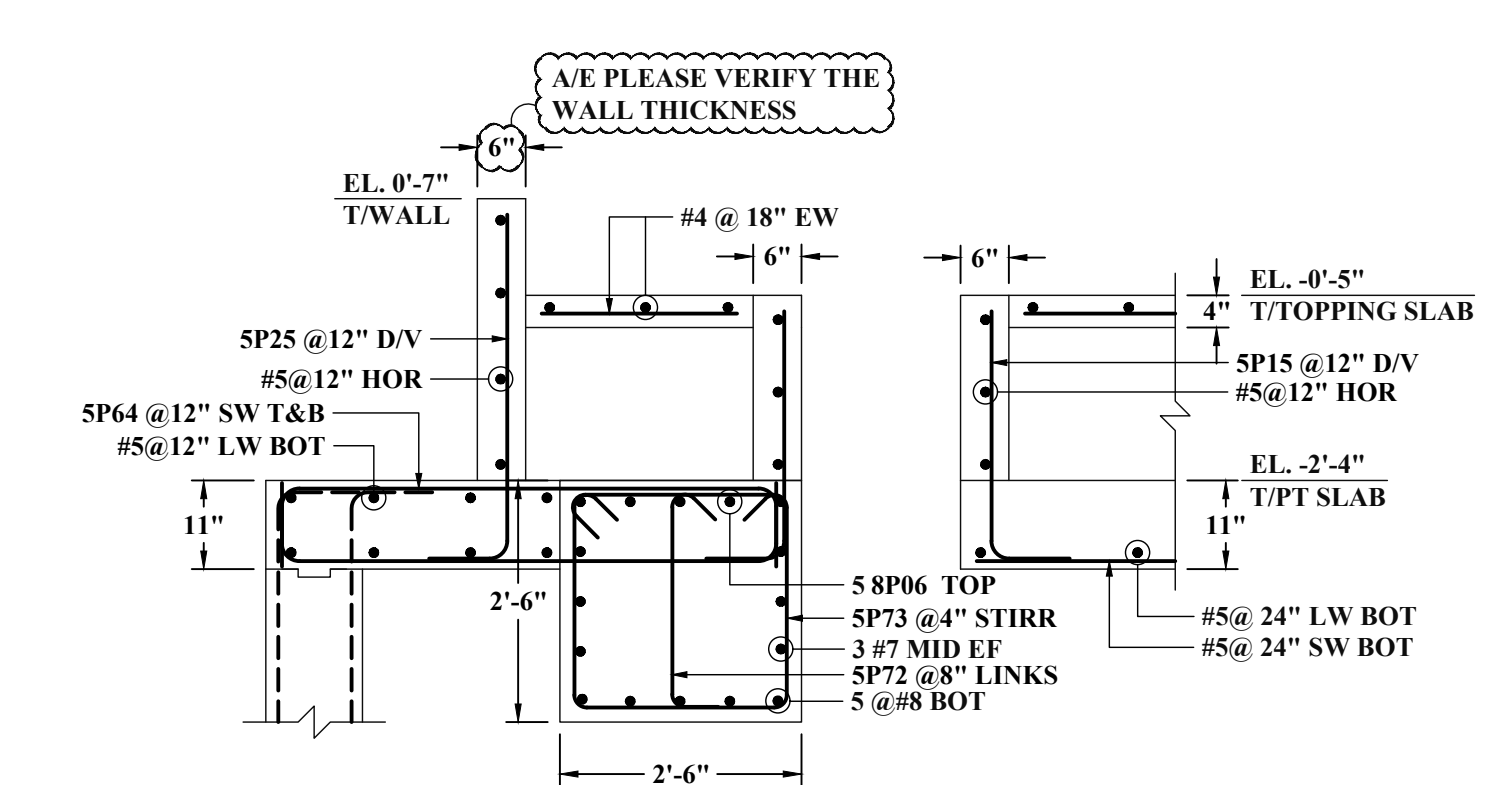
SECTION 11
SCALE: 1/2"=1'-0"
REF: 8/S412



SECTION 12
SCALE: 1/2"=1'-0"
REF: 5/S412



SECTION 13
SCALE: 1/2"=1'-0"
REF: 12/S412



SECTION 14
SCALE: 1/2"=1'-0"
REF: 15/S412

ABBREVIATIONS	
TOP	-
BOTTOM	BOT
TOP&BOTTOM	T&B
CONTINUOUS	CONT
FACE BAR	-
CORNER BAR	COR
VERTICAL	VERT
HORIZONTAL	HOR
STIRRUPS	STIRR
EACH WAY	EW
EACH FACE	EF
INNER FACE	IF
OUTER FACE	OF
EACH SIDE	ES
MASONRY	M
DOWEL	DWL
DOWEL/VERTICAL	D/V
TRANSVERSE	TRANS
LONG WAY BAR	LW
SHORT WAY BAR	SW

LAP SCHEDULE (CLASS-B)		
REF: S101A		
SIZE	5000 PSI	
	TOP	OTHER
#3	22"	17"
#4	29"	22"
#5	36"	28"
#6	43"	33"
#7	63"	49"
#8	72"	55"
#9	81"	63"
#10	91"	70"

- NOTES:-**
- TYPICAL CLEARANCES
 - INTERIOR TOP - 3/4"
 - EXTERIOR TOP - 1"
 - BOTTOM - 3/4"
 - A/E PLEASE VERIFY THE ALL CLOUED ITEMS
 - PROVIDE FIELD CUT AS REQUESTED LOCATIONS
 - BAR TO BE PLACED AT EQUAL SPACING U.O.N.
 - TILT HOOK TO ACCOMMODATE THE COVER, IF NEED

ALL BARS IN THIS DRAWING ASTM A615 GRADE 60 BLACK UNCOATED

NOTE: REINFORCING STEEL PLACING DRAWINGS TO BE USED ONLY IN CONJUNCTION WITH CONTRACT DRAWINGS AND SPECIFICATIONS. ELEVATIONS & DIMENSIONS SHOWN ON THIS DRAWING ARE FOR VERIFICATION BY THE EOR OR FOR DETAILING PURPOSES ONLY AND SHOULD NOT BE USED FOR CONSTRUCTION UNLESS VERIFIED BY THE ARCHITECT, ENGINEER OF RECORD, OR CONTRACTOR.

Release Number: PT-S(G)-1 TO PT-S(G)-10															
BENDING DETAILS															
Bar Mark	Qty	Size	Total Length	Type	X'	Y'	Z'	D'	E'	F'	G'	H'	I'	J'	K'
SP01	76	#3	7'-3"	17											
SP02	20	#3	7'-1"	17											
SP03	152	#3	6'-8"	17											
SP04	19	#3	7'-5"	17											
SP05	352	#3	1'-10"	21											
SP06	72	#3	1'-6"	21											
SP07	22	#3	2'-5"	21											
SP08	14	#3	2'-11"	21											
SP09	2	#3	4'-2"	20											
SP10	6	#3	2'-10"	17											
SP11	32	#3	7'-0"	17											
SP12	48	#3	6'-11"	17											
SP13	23	#3	6'-10"	17											
SP14	15	#3	7'-2"	17											
AP01	56	#4	5'-0"	17											
AP02	4	#4	8'-5"	2											
AP03	8	#4	5'-2"	2											
AP04	4	#4	6'-11"	2											
AP05	4	#4	11'-2"	2											
AP06	4	#4	13'-8"	2											
AP07	4	#4	6'-8"	2											
AP08	12	#4	3'-8"	17											
AP09	48	#4	9'-6"	3											
AP10	48	#4	4'-10"	3											
AP11	12	#4	3'-2"	2											
AP12	115	#4	6'-6"	2											
AP13	1	#4	10'-1"	3											
AP14	2	#4	6'-6"	3											
AP15	2	#4	6'-11"	3											
AP16	2	#4	7'-10"	3											
AP17	5	#4	4'-10"	17											
AP18	20	#4	3'-9"	11											
AP19	4	#4	7'-11"	2											
SP01	14	#5	6'-5"	2											
SP02	15	#5	6'-11"	2											
SP03	1	#5	13'-8"	9											
SP04	5	#5	15'-0"	9											
SP05	5	#5	20'-0"	9											
SP06	17	#5	6'-1"	2											
SP07	20	#5	5'-2"	2											
SP08	81	#5	4'-7"	2											
SP09	1	#5	14'-8"	9											
SP10	10	#5	25'-0"	9											
SP11	1	#5	16'-0"	9											
SP12	3	#5	20'-0"	9											

Release Number: PT-S(G)-1 TO PT-S(G)-10															
BENDING DETAILS															
Bar Mark	Qty	Size	Total Length	Type	X'	Y'	Z'	D'	E'	F'	G'	H'	I'	J'	K'
SP13	4	#5	11'-3"	9											
SP14	4	#5	30'-0"	9											
SP15	88	#5	3'-5"	2											
SP16	3	#5	10'-11"	17											
SP17	8	#5	3'-0"	2											
SP18	3	#5	7'-10"	17											
SP19	8	#5	6'-0"	17											
SP20	1	#5	5'-7"	20											
SP21	1	#5	8'-3"	20											
SP22	4	#5	11'-0"	20											
SP23	166	#5	3'-0"	2											
SP24	13	#5	6'-0"	2											
SP25	11	#5	4'-5"	2											
SP26	6	#5	8'-2"	17											
SP27	2	#5	5'-5"	17											
SP28	6	#5	8'-2"	17											
SP29	2	#5	5'-10"	2											
SP30	2	#5	5'-3"	2											
SP31	6	#5	6'-11"	20											
SP32	3	#5	9'-4"	20											
SP33	3	#5	9'-3"	20											
SP34	30	#5	4'-10"	2											
SP35	4	#5	13'-10"	17											
SP36	35	#5	4'-4"	2											
SP37	2	#5	8'-6"	2											
SP38	21	#5	7'-1"	2											
SP39	16	#5	7'-4"	2											
SP40	122	#5	8'-10"	2											
SP41	6	#5	5'-6"	17											
SP42	6	#5	4'-5"	17											
SP43	43	#5	3'-11"	2											
SP44	5	#5	2'-10"	2											
SP45	30	#5	3'-3"	2											
SP46	1	#5	6'-1"	20											
SP47	3	#5	7'-0"	20											
SP48	6	#5	13'-6"	17											
SP49	6	#5	4'-8"	17											
SP50	22	#5	17'-8"	2											
SP51	128	#5	6'-10"	2											
SP52	4	#5	5'-1"	2											
SP53	44	#5	11'-10"	S3											
SP54	44	#5	6'-4"	19											
SP55	92	#5	8'-6"	S3											
SP56	415	#5	3'-8"	19											
SP57	92	#5	3'-4"	19											

Release Number: PT-S(G)-1 TO PT-S(G)-10															
BENDING DETAILS															
Bar Mark	Qty	Size	Total Length	Type	X'	Y'	Z'	D'	E'	F'	G'	H'	I'	J'	K'
SP58	111	#5	9'-2"	S3											
SP59	26	#5	7'-10"	2											
SP60	34	#5	10'-7"	2											
SP61	28	#5	25'-1"	2											
SP62	3	#5	22'-0"	2											
SP63	7	#5	26'-4"	2											
SP64	18	#5	6'-10"	2											
SP65	1	#5	29'-1"	2											
SP66	18	#5	6'-7"	2											
SP67	42	#5	5'-5"	2											
SP68	11	#5	2'-11"	2											
SP69	1	#5	4'-8"	17											
SP70	101	#5	8'-2"	S3											
SP71	101	#5	2'-8"	T9											
SP72	238	#5	3'-2"	T9											
SP73	119	#5	7'-8"	S3											
RP01	5	#6	3'-11"	2											
RP02	5	#6	4'-6"	2											
RP03	348	#6	8'-0"	2											
RP04	18	#6	11'-0"	2											
RP05	52	#6	13'-0"	2											
RP06	153	#6	16'-0"	2											
RP07	10	#6	10'-0"	2											
RP08	86	#6	18'-6"	2											
RP09	10	#6	25'-0"	3											
RP10	2	#6	7'-2"	17											
RP11	2	#6	5'-6"	17											
RP12	8	#6	5'-0"	2											
7P01	58	#7	11'-2"	2											
7P02	64	#7	21'-2"	2											
7P03	56	#7	26'-2"	2											
RP01	56	#8	16'-4"	2											
RP02	54	#8	21'-4"	2											
RP03	14	#8	23'-1"	2											
RP04	14	#8	20'-4"	4											
RP05	5	#8	16'-7"	2											
RP06	5	#8	38'-1"	31											
RP07	5	#8	18'-8"	4											
RP08	6	#8	31'-4"	2											
RP09	6	#8	25'-7"	2											
RP10	6	#8	19'-1"	2											
RP11	5	#8	21'-0"	4											
RP12	5	#8	34'-10"	31											
10P01	28	#10	27'-4"	2											
10P02	5	#10	21'-7"	2											
10P03	5	#10	26'-11"	4											

